



2023-2024
SAN GABRIEL VALLEY

LEGISLATIVE GUIDE

brought to you by



A  Sempra Energy utility®



Including a Quick-Reference Guide for Contacting Your Local Officials

President and CEO: Luis Portillo

Director of Public Policy: Nayiri Baghdassarian

Public Policy Platform adopted by the Partnership Legislative Action Committee and Board of Directors

Design and Layout: Paul Thomas, Deputy President & CEO

Cover Image: The California State Capitol Building in Sacramento..
Courtesy David Monniaux - <https://commons.wikimedia.org/w/index.php?curid=666415>

Brought to you by



TABLE OF CONTENTS

ABOUT THE SAN GABRIEL VALLEY ECONOMIC PARTNERSHIP

Greeting from the Legislation Action Committee Chairs	1
About the Partnership: Political Advocacy Programs	2

PUBLIC POLICY PLATFORM

Economic Development	10
Education & Workforce Development	11
Energy Policy	12
Environmental Policy	14
Healthcare	16
Housing and Homelessness	18
Labor and Employment	20
Local Control	22
Regulation	23
State-Regulated Emergency Response	24
Taxation and Budgetary Policy	26
Telecommunications	31
Transportation & Goods Movement	32
Water	36

SAN GABRIEL VALLEY ELECTED OFFICIALS

Executive Branch and U.S. Senators	40
U.S. House of Representatives	41
California State Officers	43
California State Senators	45
California State Assemblymembers	46
Los Angeles County Board of Supervisors	48
Los Angeles County Elected Officials	49
San Gabriel Valley Congressional Districts (Map)	50
San Gabriel Valley State Senate Districts (Map)	51
San Gabriel Valley State Assembly Districts (Map)	52
San Gabriel Valley Supervisorial Districts (Map)	53

Sources Cited	55
---------------	----

BOARD OF DIRECTORS

(February 2023)

Partnership Board members carry a special responsibility to oversee the organization and the effectiveness of its activities and programs. Board members serve as officers of the Partnership as well as committee chairs, engaging directly in our day-to-day operations. Coming from an array of businesses, local government agencies, healthcare institutions, and higher education, the Board of the Partnership are truly regional leaders of the San Gabriel Valley.

Chair
BILL SCROGGINS, Ph.D.
Mt. San Antonio College

Vice Chair
FRAN INMAN
Majestic Realty Co.

Secretary
SALVATRICE CUMMO
Pasadena City College

Treasurer
FRANCES TEVES
California State Polytechnic University, Pomona

City Manager Representative
RENÉ BOBADILLA
City of Montebello

Immediate Past Chair
ALEX ENG
Bank of America Private Bank

Past Chair
PETER HIDALGO
Spectrum

Legal Counsel
THOMAS LENZ
Atkinson, Andelson, Loya, Ruud & Romo

Board of Directors

ATIF ALKADI
Ontario International Airport

EUGENE CHO
Kaiser Permanente

BRYAN COOK
City of Temple City

CARMEN CUEVAS
AT&T

CLIFFORD DANIELS
Methodist Hospital

ANTHONY FELLOW, Ph.D.
Upper San Gabriel Valley Municipal Water District

MAXIM GORIN
LifeLine Ambulance

LUPE HERRERA
Emanate Health

KIN HUI
Singpoli

YOKO IGAWA
Foothill Transit

ERON JACOBSON
University of La Verne

TINA JAVID
So Cal Gas Company

DAVID KLUG
City of Pasadena

BOB KUHN
San Gabriel Basin Water Quality Authority

KEN LEE
Pacific Plaza Premier Development Group

WALTER MARQUEZ
Fairplex

SAM PEDROZA
City of Industry

MICHAEL RABIN
City of Hope

DEAN G. RALLIS, JR.
Hahn & Hahn LLP

BRIAN SAENGER
The Ratkovich Company

MAUREEN TAYLOR
Azusa Pacific University

LUPE VALDEZ
Union Pacific

THOMAS WONG
Southern California Edison

Economic Development Committee Chairs

ARMINE CHAPARYAN
City of South Pasadena

KEN LEE
Pacific Plaza Premier Development Group

Legislative Committee Chairs

FRAN INMAN
Majestic Realty

BOB KUHN
San Gabriel Basin Water Quality Authority

PETER HIDALGO
Spectrum

THOMAS WONG
Southern California Edison

Marketing Committee Chair

SAM PEDROZA
City of Industry

Workforce Development Committee Chairs

CLIFFORD DANIELS
Methodist Hospital

SALVATRICE CUMMO
Pasadena City College

BILL SCROGGINS, Ph.D.
Mt. San Antonio College



Dear San Gabriel Valley leaders and regional stakeholders,

Over 35 years ago, the San Gabriel Valley Economic Partnership was established by a committed group of business and community leaders to support economic and regional growth. Today, the Partnership continues to provide leadership in the San Gabriel Valley, not only as the voice

of business, but also as an advocate for the prosperity of our entire region. For the 2023 -2024 legislative cycle, we will continue to focus on our ongoing priority to create opportunities for the San Gabriel Valley through job growth and economic development. We will continue to bring together stakeholders from all levels and all sectors in order to accomplish our shared vision of regional success.

In the years since the publication of the 2021 – 2022 legislative guide, our region has come together, emerging out of a global pandemic, and concurrently worked to address issues impacting the San Gabriel Valley and beyond with productive solutions. Our goals are aligned—the approach is where we work to fine-tune. We are fortunate to have elected representatives that work hand-in-hand with regional stakeholders to come up with the most effective solutions. The relationships we have and continue to build with our representatives have made it possible for residents and businesses to continue to live, grow, and thrive in the region. With newly drawn legislative districts coming into effect, the Partnership welcomes our region’s new representatives and will work to familiarize them with our communities.

The Partnership advocates for policies that encourage job growth, promote a business-friendly environment in California, and improve the quality of life for the San Gabriel Valley. The 2023 – 2024 Legislative Guide will help inform Partnership members, local elected officials, and our representatives in Sacramento and Washington D.C. about regional needs and the policies we support. It also features important statistical information that provides context for our policy recommendations. Whatever your interests may be, the Legislative Guide will provide you with quality information and the tools to contact and effectively advocate with your elected officials.

We appreciate the financial generosity of our leadership and advertising sponsors and thank them for their continued support of the Partnership and our mission. Additional information about the Partnership and its legislative advocacy program can be found at www.sgvppartnership.org.

Sincerely,

The San Gabriel Valley Economic Partnership Legislative Committee Chairs



Peter Hidalgo
Co-Chair



Fran Inman
Co-Chair



Robert Kuhn
Co-Chair



Thomas Wong
Co-Chair

ABOUT THE SAN GABRIEL VALLEY ECONOMIC PARTNERSHIP



The San Gabriel Valley Economic Partnership is a regional economic development corporation covering eastern Los Angeles County that is committed to advancing the economic vitality and quality of life of the San Gabriel Valley. It is a membership organization comprised of major businesses, local governments, educational institutions, healthcare facilities and non-profit groups.

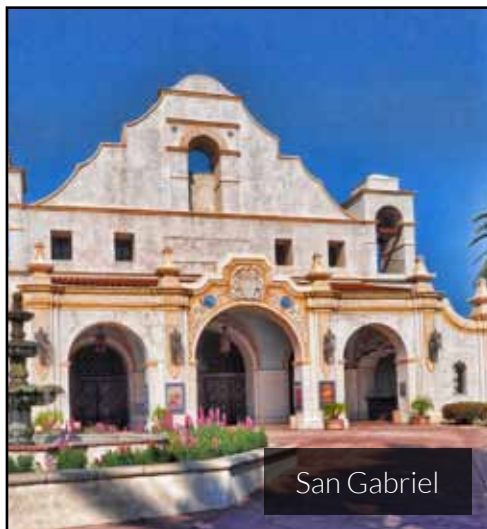
The San Gabriel Valley is home to over two million residents and is one of the most diverse regions in the United States, having no majority ethnic or racial group. In Southern California, the San Gabriel Valley is famous for its extraordinary Asian cuisine and for historic cultural centers such as the Rose Bowl, the Huntington Library, Santa Anita Park, and the Pomona Fairplex.

POLITICAL ADVOCACY

The Partnership advocates for pro-growth, pro-business policies with local, state, and federal officials. We carefully monitor new legislation, newly proposed fees, rules and regulations, and we work closely with business organizations in Southern California and around the state to create a friendlier business climate.



Pomona



San Gabriel



Pasadena

REGIONAL MARKETING

The Partnership creatively promotes and markets the San Gabriel Valley. We bring our member cities to international trade shows, collaborate with the tourism and hospitality sector, and facilitate global marketing collaborations.

BUSINESS ASSISTANCE

The Partnership's Business Assistance Program provides support to businesses located in or relocating to the San Gabriel Valley to help them succeed. The Partnership acts as a confidential liaison between business, local government, educational institutions, and public agencies to facilitate the coordination of programs and assist with a variety of challenges.

WORKFORCE DEVELOPMENT

The Partnership helps businesses collaborate with education institutions to expand the pool of skilled, work-ready graduates and professionals in growing job sectors in the San Gabriel Valley. The region is home to a broad range of world-class public schools, community colleges, research institutions and liberal arts colleges.

POLITICAL ADVOCACY PROGRAMS

The San Gabriel Valley Economic Partnership actively tracks and engages on many key local, state and federal policy issues through our political advocacy program. Through our advocacy efforts, the Partnership promotes positive pro-growth, pro-business policies that improve the San Gabriel Valley and the state and federal business climate.



FEDERAL POLICY

The Partnership tracks major items of federal policy, especially on taxes, trade, healthcare, transportation, and water infrastructure and works closely with our allies at the U.S. Chamber of Commerce to promote pro-business federal policies.



LEGISLATIVE ACTION COMMITTEE

The Partnership educates its members on new developments in the political arena through monthly Legislative Action Committee meetings. This committee reviews and takes positions on legislation, hears updates on new projects or policy initiatives, and provides a forum for our members to solicit the political support of the Partnership.



COUNTY ADVOCACY

The Partnership works on major economic issues with the County Supervisors, transportation issues with Metro, goods movement with the San Pedro ports, and other county departments.



SACRAMENTO & WASHINGTON TRIPS

The Partnership regularly travels to Sacramento and Washington to advocate for specific pieces of legislation or major projects here in the San Gabriel Valley. Board members and Partnership staff often visit our San Gabriel Valley representatives and join coalition partners in meetings with other lawmakers.

The Partnership met with many elected officials and representative staff in 2021-2022. Meetings and their presence at Partnership events have been extremely valuable and productive in working towards aligned missions and goals for the San Gabriel Valley. Below is a list of the federal, state, and county elected officials and their offices that the Partnership and our members met with throughout 2021 - 2022.

ELECTED OFFICIALS WHO MET WITH THE PARTNERSHIP IN 2021-2022

Federal Officeholders
U.S. Senator Dianne Feinstein (D-CA)
Representative Judy Chu (D-27th)
Representative Young Kim (R-39th)
Representative Grace Napolitano (D-32nd)
Congresswoman Linda Sanchez (D-38th)

State Officers
Governor Gavin Newsom (D)
Lieutenant Governor Eleni Kounalakis (D)
Attorney General Rob Bonta (D)

State Senators
Senator Bob Archuleta (D-32nd)
Senator Connie Leyva (D-20th)
Senator Josh Newman (D-29th)
Senator Anthony J. Portantino (D-25th)
Senator Susan Rubio (D-22nd)

State Assemblymembers
Assemblymember Lisa Calderon (D-57th)
Assemblymember Phillip Chen (R-55th)
Assemblymember Laura Friedman (D-43rd)
Assemblymember Mike Fong (D-49th)
Assemblymember Chris Holden (D-41st)
Assemblymember Freddie Rodriguez (D-52nd)
Assemblymember Blanca Rubio (D-48th)

Los Angeles County Officeholders
Los Angeles County Officeholders Supervisor Kathryn Barger (District 5)
Supervisor Hilda Solis (District 1)
Los Angeles County Assessor Jeffrey Prang



MEETINGS WITH LAWMAKERS

The Partnership regularly hosts breakfasts, luncheons, and roundtable events with San Gabriel Valley legislators and lawmakers from other regions.

Small group meetings provide substantive interaction for our members as well as for our elected officials, giving them time to speak in-depth about their work in Sacramento and Washington.



LEGISLATIVE NETWORKING RECEPTION

The San Gabriel Valley Legislative Networking Reception, typically held during the Spring Recess for well over 20 years, regularly draws 250 attendees and is well attended by local city, water, school district, and college trustee elected officials in addition to our representatives from the County Board of Supervisors, the State Legislature, and Congress.

ANALYSIS OF THE 2021 - 2022 LEGISLATIVE SESSION

With the pandemic being the center of every policy priority and conversation, the State Legislature continued to limit the number of bills each Senator and Assemblymember could carry. This forced elected officials to be more intentional than ever with their bill packages as they decided what issues needed to be prioritized.

2022 also brought leadership changes in Sacramento. After 6 years of holding the position of Speaker of the California State Assembly, Speaker Anthony Rendon (D-62nd) was publicly challenged by Assemblymember Robert Rivas (D-29th). After months of tension, elections, and policy making, 2022 ended with an agreement that would transition Assemblymember Rivas into the Speaker role in June 2023.

The 2022 election cycle came with its own list of changes. Candidates and incumbents ran to represent newly drawn districts from the 2020 Census. While the San Gabriel Valley maintains many of the same elected officials through 2024, some residents will have two elected officials representing them for the time being. The region also welcomed Assemblymember Miguel Santiago, who was first elected to the State Assembly in 2014 and now represents parts of our region.

Budget-wise, California had a nearly \$98 billion budget surplus for the 2022 - 2023 fiscal year, leading to a lot of much needed one-time spending for the State. Conversely, 2023 began with an announcement from Governor Newsom that 2023 -2024 budget will be facing a deficit of about \$25 billion. After two years of a worldwide health crisis, policy focus moves to addressing an uncertain economic future while tackling the biggest needs of Californians. It will be interesting to see and navigate policy as we all now prepare to tighten our belts.

POLICY POSITIONS HELD BY THE SAN GABRIEL VALLEY ECONOMIC PARTNERSHIP IN 2021 - 2022

Measure	Author	Subject	Position
AB 14	(Aguiar-Curry)	Deaf and disabled telecommunications program: surcharges.	Support
AB 22	(McCarty)	Preschool data: data collection.	Support
AB 62	(Gray)	Income taxes: credits: costs to comply with COVID-19 regulations.	Support
AB 65	(Low)	California Universal Basic Income Program: Personal Income Tax.	Oppose
AB 71	(Rivas, Luz)	Homelessness funding: Bring California Home Act.	Oppose
AB 95	(Low)	Employees: bereavement leave.	Oppose
AB 99	(Irwin)	School safety: crisis intervention & violence prevention program.	Support
AB 102	(Holden)	College and Career Access Pathways partnerships.	Support
AB 230	(Voepel)	Employment: flexible work schedules.	Support
AB 257	(Holden)	Food facilities and employment.	Oppose
AB 310	(Lee)	Wealth tax.	Oppose
AB 385	(Flora)	Labor Code Private Attorneys General Act of 2004:	Support
AB 426	(Bauer-Kahan)	Toxic air contaminants.	Oppose
AB 442	(Mayes)	Metropolitan Water District: master reclamation plan.	Support
AB 513	(Bigelow)	Employment: telecommuting employees.	Support
AB 530	(Fong)	Private Attorneys General Act of 2004: filing requirements.	Support
AB 570	(Santiago)	Dependent parent health care coverage.	Oppose
AB 616	(Stone)	Agricultural labor relations: representation ballot card election.	Oppose
AB 650	(Muratsuchi)	Health care workers: COVID-19: hazard pay retention bonuses.	Oppose
AB 654	(Reyes)	COVID-19: exposure: notification.	Oppose
AB 693	(Chau)	Proposition 65: enforcement.	Oppose
AB 701	(Gonzalez, Lorena)	Warehouse distribution centers.	Oppose
AB 703	(Rubio, Blanca)	Open meetings: local agencies: teleconferences.	Support
AB 879	(Rubio, Blanca)	California Tax Amnesty and Revenue Recovery Act.	Support
AB 995	(Gonzalez, Lorena)	Paid sick days: accrual and use.	Oppose

POLICY POSITIONS HELD BY THE SAN GABRIEL VALLEY ECONOMIC PARTNERSHIP
IN 2021 – 2022 (CONTINUED)

Measure	Author	Subject	Position
AB 1001	(Garcia, Cristina)	Environment: mitigation measures for air quality impacts	Oppose
AB 1028	(Seyarto)	Telework Flexibility Act.	Support
AB 1033	(Bauer-Kahan)	Small employer family leave mediation: pilot program.	Support
AB 1041	(Wicks)	Employment: Leave	Oppose
AB 1072	(Reyes)	Small businesses: technical assistance: public contracts.	Support
AB 1074	(Gonzalez, Lorena)	Employment: displaced workers.	Oppose
AB 1119	(Wicks)	Employment discrimination.	Oppose
AB 1122	(Garcia, Cristina)	Employment discrimination.	Support
AB 1179	(Carrillo)	Employer provided benefit: backup childcare.	Oppose
AB 1192	(Kalra)	Employment information: worker metrics.	Oppose
AB 1199	(Gipson)	Homes and Corporate Monopoly Transparency Excise Tax.	Oppose
AB 1253	(Santiago)	Personal income taxes: additional tax.	Oppose
AB 1296	(Kamlager)	South Coast Air Quality Management District: board membership.	Oppose
AB 1400	(Kalra)	Guaranteed Health Care for All.	Oppose
AB 1410	(Rodriguez)	Common interest developments.	Support
AB 1456	(Medina)	Student financial aid: Cal Grant Reform Act.	Support
AB 1547	(Reyes)	Air pollution: warehouse facilities.	Oppose
AB 1573	(Committee on Jobs, Economic Development, and the Economy)	California Business Retention Program.	Support
AB 1760	(Rodriguez)	Bulk merchandise pallets.	Support
AB 1845	(Calderon)	Metropolitan Water District: alternative project delivery methods.	Support
AB 1951	(Grayson)	Sales and use tax: exemptions: manufacturing.	Support
AB 2106	(R. Rivas)	Water Quality: Permits	Oppose
AB 2215	(Rubio, Blanca)	Pupil instruction: financial education.	Support
AB 2226	(Cervantes)	California Main Street Program.	Support
AB 2342	(Cervantes)	Community Economic Resilience Fund Program.	Support
AB 2400	(Cervantes)	Capital Access Loan Program for Small Businesses.	Support
AB 2449	(Rubio, Blanca)	Open meetings: local agencies: teleconferences.	Support
AB 2748	(Holden)	Digital Equity in Video Franchising Act of 2022.	Oppose
AB 2840	(Reyes)	Qualifying logistics use projects.	Oppose
AB 2893	(Daly)	Standardized regulatory impact analysis: comments, updates, and format.	Support
ACA 1	(Aguiar-Curry)	Affordable housing and public infrastructure: voter approval.	Oppose
ACA 8	(Lee)	Wealth tax: appropriation limits.	Oppose
SB 4	(Gonzalez)	Communications: California Advanced Services Fund.	Support
SB 7	(Atkins)	Jobs and Economic Improvement Through Environmental Leadership Act of 2021.	Support
SB 9	(Atkins)	Housing development: approvals.	Oppose
SB 12	(McGuire)	Local government: planning and zoning: wildfires.	Oppose
SB 28	(Caballero)	Digital Infrastructure and Video Competition Act of 2006: deployment data.	Oppose
SB 31	(Cortese)	Building decarbonization.	Oppose
SB 44	(Allen)	CEQA: environmental leadership transit projects.	Support
SB 55	(Stern)	Very high fire hazard severity zone: development prohibition: supplemental height and density bonuses.	Oppose

POLICY POSITIONS HELD BY THE SAN GABRIEL VALLEY ECONOMIC PARTNERSHIP
IN 2021 – 2022 (CONTINUED)

Measure	Author	Subject	Position
SB 62	(Durazo)	Employment: garment manufacturing.	Oppose
SB 67	(Becker)	Clean energy: California 24/7 Clean Energy Standard Program.	Oppose
SB 74	(Borgeas)	Keep California Working Act.	Support
SB 86	(Committee on Budget and Fiscal Review)	Public social services.	Support
SB 95	(Skinner)	Employment: COVID-19: supplemental paid sick leave.	Oppose
SB 213	(Cortese)	Workers’ compensation: hospital employees.	Oppose
SB 230	(Portantino)	State Water Resources Control Board: Constituents of Emerging Concern in Drinking Water Program.	Support
SB 260	(Wiener)	Climate Corporate Accountability Act.	Oppose
SB 285	(McGuire)	California Tourism Recovery Act.	Support
SB 342	(Gonzalez)	South Coast Air Quality Management District: board membership.	Oppose
SB 410	(Leyva)	Public Postsecondary Education: California State University: Nonfaculty Staff Employees: Merit Salary System	Oppose
SB 449	(Stern)	Climate-related financial risk.	Oppose
SB 467	(Wiener)	Expert witnesses: writ of habeas corpus.	Oppose
SB 606	(Gonzalez)	Workplace safety: egregious violations.	Oppose
SB 616	(Rubio)	Child custody: child abuse and safety.	Support
SB 743	(Bradford)	Housing developments: broadband adoption: grant program.	Support
SB 847	(Hurtado)	COVID-19 relief: tenancy: grant program.	Support
SB 851	(Portantino)	Personal Income Tax Law: Small Business Relief Act: elective tax.	Support
SB 987	(Portantino)	California Cancer Care Equity Act.	Support
SB 991	(Newman)	Progressive Design Build for Local Water Agencies	Support
SB 1133	(Archuleta)	Price gouging: state of emergency.	Support
SB 1137	(Gonzalez)	Oil and gas: operations: location restrictions: notice of intention: health protection zone: sensitive receptors	Oppose
SB 1162	(Limon)	Salaries and Wages	Oppose
SB 1177	(Portantino)	Joint powers authorities: Cities of Burbank, Glendale, and Pasadena.	Support
SB 1215	(Newman)	Statewide Battery Recycling Program	Support
SB 1349	(Caballero)	Taxation: credits: California New Employment Credit.	Support
SB 1410	(Caballero)	California Environmental Quality Act: transportation impacts.	Support

PUBLIC POLICY PLATFORM



Civic Auditorium in downtown
San Gabriel.

ECONOMIC DEVELOPMENT



Economic growth is vital to the San Gabriel Valley, providing new jobs, expansion for businesses and critical revenue to local governments and agencies. In order to have effective economic development, city governments must have the discretionary authority to implement their own incentive programs and have funding resources available to attract new businesses and address infrastructure challenges.

THE PARTNERSHIP SUPPORTS

- **Fast-Track Permitting:** Expediting the entitlement and permit approval processes in municipal and county government helps businesses save time and money. Parallel processing of permits, a full checklist of requirements for each permit along with estimated approval timelines and costs, quick online approvals, tracking of where permits are in the process, and dedicated customer service are ways local governments can greatly improve their business-friendliness.
 - **Local Economic Development Staff:** Cities need dedicated economic development staff. These personnel are vital to working with prospective developers, attracting new investment to the city, and projecting a positive image for the community.
 - **Restoration of Tax Increment Financing for Development and Infrastructure:** With the dissolution of redevelopment, California cities were deprived of a major financial resource to attract new businesses, facilitate development, create new jobs, and upgrade critical infrastructure. The Partnership supports re-establishing the authority of local governments to use tax increment financing to fund public infrastructure projects and greater flexibility in the creation and use of Enhanced Infrastructure Finance Districts.
 - **Small Business Development Centers:** State funding to match local dollars will help support Small Business Development Centers (SBDCs) which provide extraordinary resources and services to small businesses.
 - **Brownfield Cleanup Funds:** Federal and state governments should provide funding for cleanup of local contaminated sites when the polluter cannot be identified or no longer exists.
 - **International Investment:** The San Gabriel Valley is a prime destination for international businesses to establish a base outside of their region. The Partnership supports efforts to not only bringing more international business to the region, but also locating international business development in the region.
 - **Improving the Image of California and Los Angeles County:** California should continue to fund a strong marketing, tourism, film commission and global branding effort to attract new investment and visitors to the San Gabriel Valley.
 - **Strategic Industry Incentives:** California should strive to improve its business environment for all sectors of the economy. In select cases, however, strategic industry-focused tax incentives should be used to help local companies compete for federal contracts or to attract out-of-state investment. This is especially true for high-wage industries such as aerospace, advanced manufacturing, and biotechnology.
- The Partnership supports making permanent these existing incentive programs:**
- Manufacturing/R&D/Biotech Sales and Use Tax Exemption
 - The New Employment Credit

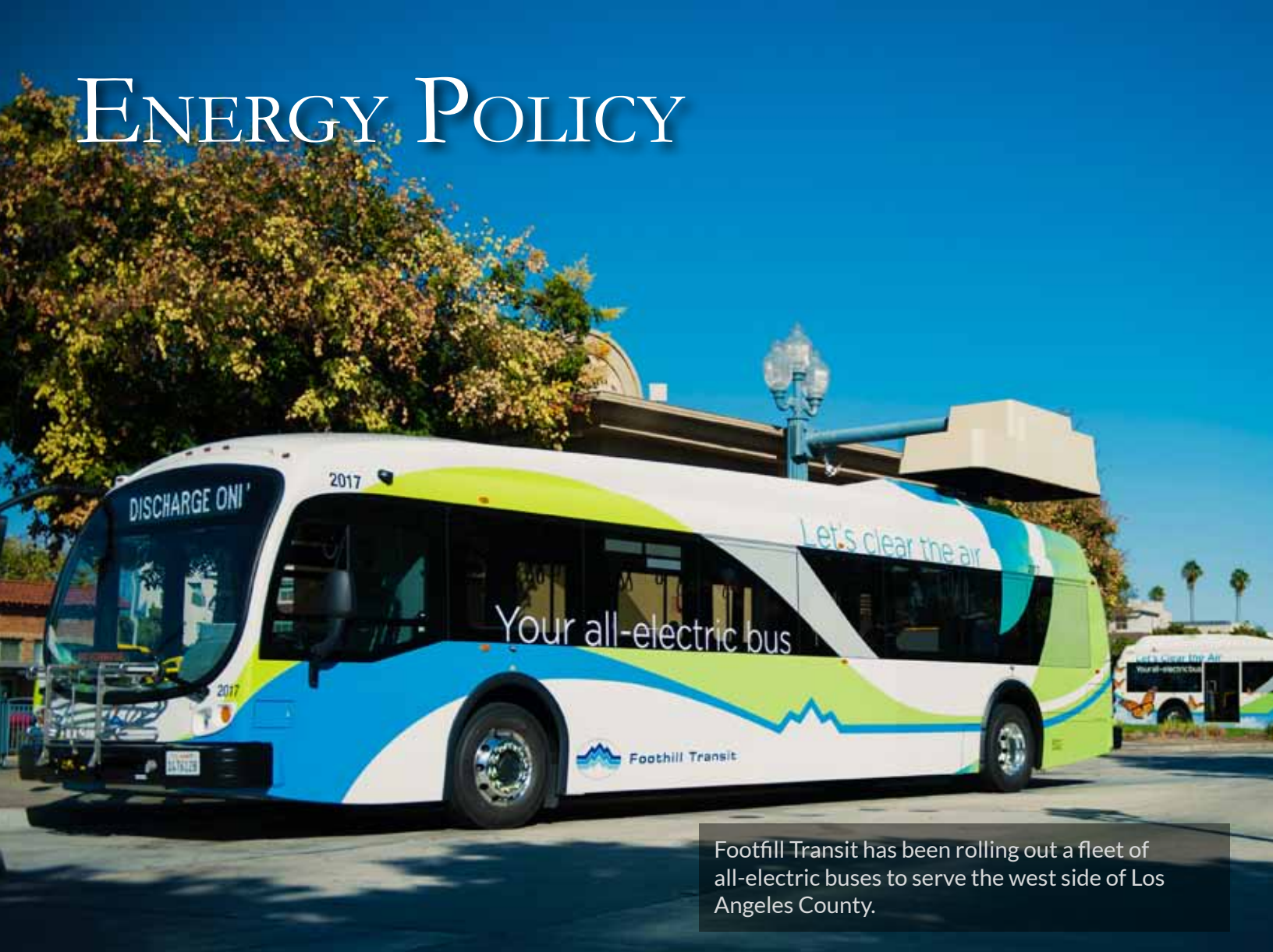
EDUCATION & WORKFORCE DEVELOPMENT

A well-trained workforce is vital for the San Gabriel Valley to be competitive in the global economy. Businesses rely on the education system to prepare future employees. It is critical that school districts and institutions of higher learning integrate their curriculum with the workforce needs of the regional market and prepare students for a fast-changing economy.

THE PARTNERSHIP SUPPORTS

- **Quality Education:** Institutional reforms that provide a relevant, substantive, quality education that meets the needs of present-day demand to California students and increase graduation rates, thereby supporting K-12 and higher education to be more effective in preparing students to enter a dynamic economy.
- **Career Technical Education in the K-12 System:** State funding to expand Career Technical Education (CTE) courses that prepare students for careers in the skilled trades, biotech, aerospace, and health sectors. Career Pathways in high school should include attainment of industry-recognized certifications.
- **Work-based Learning:** The State should support work-based learning in curriculum, expand access to apprenticeships, and other alternatives to college. The State should explore a pilot program offering tax incentives to businesses to encourage them to participate in-job experience programs with local schools. This can include guest speakers, job shadowing, mock interviews, worksite tours, internships, and teacher externships.
- **State Budget Surplus to Offset Local Pension Obligations:** : The pension obligations of school districts and higher education institutions have rapidly increased in the past decade, eating into budgets, and limiting the funding available for teaching and services. The state should appropriate a significant portion of the projected \$7 billion 2020-21 budget surplus into a fund to assist districts, colleges, and universities to pay their pension obligations to CalSTRS and CalPERS.
- **State Funding for Adult Education:** : The state should provide sustainable funding for Workforce Development Boards and other adult career training institutions such as Adult Schools and ROPs that can help students expand their job skills.
- **K-12 Teacher Externships:** Externship programs provide technical training for teachers and give them real-world workplace experience which can shape their curriculum and enable them to teach their students about the opportunities available in a variety of career paths.
- **Streamlined Teacher and Administrator Certification:** State certification for teachers and administrators should be streamlined, including substantive analysis of how to expand the pool of high-quality teachers and administrators. The establishment of certification programs for post-career teaching for industry should be encouraged to better prepare the next generation of professionals.
- **Streamlined Matriculation:** Universities, community colleges, K-12 schools, as well as occupational training programs and workforce investment boards should regularly communicate and collaborate to respond to labor market needs and to expedite matriculation between educational institutions.
- **Veterans Programs:** Local communities should be encouraged to put programs in place that assist veterans to find quality jobs and help integrate former service members into the workforce.

ENERGY POLICY



Foothill Transit has been rolling out a fleet of all-electric buses to serve the west side of Los Angeles County.

Reliable, affordable, and safe and secure energy is essential to the quality of life of residents and the success of businesses in the San Gabriel Valley. Climate change impacts continue to worsen in our state and region, including devastating wildfires, exhaustive drought conditions, and extreme heat, which cost our state and region billions of dollars a year. We need an energy system that is resilient to these impacts, that a transition to clean energy is done while balancing intermittent and baseload resources. Utilities should also strive to keep their prices affordable while maintaining and upgrading their infrastructure. The Partnership supports efforts to tackle climate change, improve the reliability of our energy supply, and keep energy costs affordable.

THE PARTNERSHIP SUPPORTS

- **Incentives for Energy Conservation:** Incentives for energy efficiency, energy conservation, and participation in demand response programs that are cost-effective to help businesses stay competitive.
- **Statewide Energy Plan:** California should develop a statewide energy plan to identify resource gaps and that would streamline regulatory oversight/permitting, eliminate rule duplication and encourage a variety of electrical generation and

energy production methods throughout the state, thereby supporting competition and lowering costs, particularly to build out the infrastructure needed to serve our evolving needs in light of climate change.

- **Efforts to Build More Resilient Energy Infrastructure:** We need to seek to ensure reliable, safe and affordable energy supplies as climate risks and other natural disasters (ex. earthquakes) loom, including hardening our electrical grid and safety improvements on our natural gas system.

- **Market-Based Programs:** Market-based programs, such as the California cap-and-trade program, that include meaningful cost containment mechanisms that allow businesses to purchase carbon offset credits are far more effective in improving the environment than draconian command-and-control regulations. Strict oversight is necessary, however, to ensure the funds collected are properly and equitably allocated.
- **Alternative Transportation Fuels:** The Partnership supports the development of new technologies, infrastructure and utilization of alternative energy sources, such as renewable natural gas, hydrogen fuel cells, electrification and other drop-in low- and zero-carbon fuels like renewable diesel. As the state seeks to phase out internal combustion engine vehicles in the coming decades, the state must be thoughtful about helping to bring down the costs of zero-emission vehicles (ZEVs) and plug-in hybrid vehicles and deploying the infrastructure to support businesses and residents, particularly for those in rural, under-resourced and disadvantaged communities.
- **Fracking:** Reasonable and effective regulatory oversight of hydraulic fracturing, better known as fracking, to ensure that the methods employed meet with state standards and that water used in fracking is properly treated.

THE PARTNERSHIP OPPOSES

- **Phase-out of Fossil Fuels from Buildings in California:** The California Public Utilities Commission, as well as the California Energy Commission, have explored the option of phasing out fossil fuel use in buildings in California. This type of regulation would impose extremely high costs on Californians and have a major impact on key businesses here in the San Gabriel Valley that rely on fossil fuels in the primary operation of their enterprises. The Partnership opposes state regulatory efforts to mandate a phase-out of fossil fuel use in buildings. Instead, we urge the state to adopt a sensible, balanced approach that uses a mix of sources to provide reliable, cost-effective energy for the state.

Energy Facts

4th largest¹
Electricity in U.S.

5nd largest²
largest conventional hydroelectric generating capacity in U.S.

#1 largest³
electricity producer from renewable resources in U.S.

131 million⁴
barrels of crude oil produced in 2021

25.49 cents/kWh⁵
average retail price of electricity to residential sector (October 2022)

**20.57 cents per 1,000
cubit feet⁶**
natural gas residential price (October 2022)

48th⁷
in U.S. Ranking in Total Energy Consumed per Capita, 2022 (million Btu)

4th Highest in U.S.⁸
in U.S. total net electricity generation

15th⁹
in U.S. natural gas marketed production (2021)

ENVIRONMENTAL POLICY

Significant progress has been made in Southern California over the past 40 years to improve the water and air quality in the region while preserving open space for native wildlife. State policy and regulations should apply a thoughtful, balanced approach to safeguard the environment while also preserving jobs and encouraging economic growth, including new construction and development. State and federal environmental policies, especially those regulating carbon emissions and other air pollutants, must consider the socio-economic cost of each rule that is implemented.

THE PARTNERSHIP SUPPORTS

- **Comprehensive CEQA Reform:** The California Environmental Quality Act (CEQA) must be reformed to expedite the project approval process and stop frivolous, predatory litigation that does not pertain to environmental protection.

Market-based mechanisms, such as the California cap-and-trade programs, incorporate meaningful cost containment mechanisms, such as allowing businesses to purchase carbon offset credits. These are far more effective in improving the environment

than draconian command-and-control regulations. Strict oversight is necessary, however, to ensure the funds collected from California's cap-and-trade program are properly and equitably allocated to the project areas authorized by state law.

- **Applying Carbon Credits to Permitting Fees:** The State of California should allow businesses to use the monetary value of purchased carbon offset credits, which they have not used but cannot sell, to their future permitting fees. This will allow businesses to get value for the money they invested in credits while

not increasing carbon emissions.

- **Economic Impact Analysis for Regulations:** Environmental regulations should be technologically feasible, cost-effective, not result in "leakage" and be implemented only after a thorough economic impact and comparative emissions lifecycle analysis has been completed.
- **Incentives and Energy Efficient Retrofitting:** Incentives and transition programs for businesses to upgrade their facilities have a proven record of success in achieving greater energy efficiency, reducing energy costs and pollution.
- **Incentives for Clean Vehicles and Fuels:** Businesses can upgrade commercial vehicle fleets much faster with the assistance of state incentive programs to offset the purchase cost of new vehicles. State funding is also critical to construct the supporting infrastructure for low and zero-emission vehicles.
- **Regional Green Space:** Preservation of regional green space is an important part of the quality of life in the San Gabriel Valley, especially for the residents of cities with limited park availability. The Partnership supports the efforts of the Rivers and Mountains

Conservancy to develop regional parks such as the Azusa River Wilderness Park. The Partnership also supports the Tres Hermanos Conservation Authority to maintain that property as open space at this time.

THE PARTNERSHIP OPPOSES

- **Indirect Source Rules and Facility Emission Caps:** Local air quality management districts in California have considered capping the number of vehicles and trucks that can visit logistics facilities or warehouses each day. These vehicle caps would then be reduced over time to decrease the emissions these facilities indirectly produce due to the volume of traffic. The Partnership opposes these indirect source rules or facility emission caps as fundamentally flawed. Rather than limiting the number of vehicles that may visit a warehouse, port, railyard or airport, air quality agencies should focus on incentivizing the conversion of vehicles to cleaner, zero-emission engines making it unnecessary to impose limits on the economic activities of the goods movement sector. Additionally, costs should not be placed onto businesses that do not take part in adding/subtracting emissions.



Clouds resting on the majestic San Gabriel Mountains.



A bioscience student learns both research and practitioner skills at Cal Poly Pomona.

HEALTHCARE



Emanate Health, a collective of 16 local hospitals, is one of the largest healthcare providers in the region.

The largest employment sector in the San Gabriel Valley is healthcare. With several significant hospitals and medical care centers in the region, healthcare policy is a major concern to our residents for the effect it has on their own health and their families as well as the broader local economy. Our healthcare system is also facing two major changes in the next few years: an aging workforce and technological change. There will likely continue to be modifications to the Affordable Care Act in the future, but much progress has been made in providing more Americans greater medical insurance coverage. State and local governments must find ways to streamline their healthcare outlays and reduce costs while striving to ensure the care provided is effective and adequate for all.

THE PARTNERSHIP SUPPORTS

- **Competition in the Health Care Market:** Competition among private-sector providers is the best means to achieve a more efficient, affordable, and quality-driven healthcare system.
- **Preservation of MICRA in California and Adoption of Similar Federal Policies:** Meritless lawsuits should be restricted against hospitals and other providers alleging breach of government obligation to provide medical care to uninsured patients.
- **Reasonable Flexibility in Nurse/Patient Ratios:** California should adopt a reasonable flexibility in nurse-to-patient ratios that recognize the practical workplace challenges that are consistent with the provision of quality hospital care.

THE PARTNERSHIP OPPOSES

- **State-Level Individual Health Insurance Mandates:** Elimination of the federal individual mandate penalty has raised questions about the

long-term financing of health care at the state level, possibly leading to destabilization in the health insurance market. California is considering a state-level mandate requiring the purchase of health insurance. The State Legislature should carefully weigh all policy options to stabilize the market to ensure small businesses and individuals still have a variety of health insurance choices.

- **Single-Payer Health Care:** Ensuring that all Californians have access to quality, affordable health care is an admirable goal, but a single payer model would of necessity limit the choices available in health care and denies individuals the option to pay for health care outside of public sources. It restricts the freedom to choose a health care provider and would subject Californians to long waits to receive care. High taxes required to fund such a system – which has no cost containment measures – would crowd out other state services and require overturning the Prop 4 appropriations limit and the Prop 98 education finance guarantees.

HOUSING AND HOMELESSNESS

Housing affordability remains the foremost economic and policy challenge facing California today. The high cost of housing is the primary driver of California’s high poverty rate and homelessness. Lowering housing prices ultimately depends on increasing the available housing supply, which requires more construction, and in many urban areas of the state, greater density. State, county, and municipal governments are each responsible to expedite development by reducing barriers that inhibit new housing construction. State policy should focus on removing regulatory delays and costs that impede development, especially reforming the California Environmental Quality Act that is often used to kill new housing projects. City governments should make housing development a top priority in their general and specific plans, rezoning land where appropriate for greater density, and finding ways to reduce impact fees. State lawmakers should find ways to restore local tax increment financing to allow cities the funding and flexibility to subsidize affordable housing development.

THE PARTNERSHIP SUPPORTS

- **State and Regional Funding Incentives For Cities That Achieve Housing Goals:** The state should give cities that meet their assigned Regional Housing Needs Assessment (RHNA) zoning goals additional property tax revenues, with added bonuses when the housing includes affordable units.
- **Restoration of Tax Increment Financing to Cities to Subsidize Affordable Units:** The state should restore tax increment financing to cities to enable them to subsidize affordable housing construction and have a permanent source of funding for affordable housing. Counties and school districts would benefit from yielding their property tax increment through the construction of more affordable housing.
- **Local Zoning Control:** Cities should have the autonomy to maintain their own zoning control and meeting the demand of housing within their communities.
- **Limits on Permitting Fees and Development Assessments:** Communities often saddle new developments with heavy fees to pay for infrastructure needs. Counties and cities should be empowered to set a reasonable limit on how much can be charged to a developer in permitting fees and development assessments within their jurisdictions.
- **Amending State Law to Encourage School Districts to Sell Surplus Property for Housing:** State law expedites the community review process for school

districts if they sell or lease surplus school property for housing but also restricts sale or lease revenues to only be used for capital expenditures. State law should be amended to allow surplus property sale or lease revenues to also be deposited in new special funds to pay for future pension obligations. This option would only be available if the property is sold or leased for housing. Districts could also require units to be affordable or made available to district employees.

- **Equitable Distribution and Effective Implementation of Measure H:** The San Gabriel Valley has seen a significant rise in the number of homeless in the region. Los Angeles County has struggled to properly use the available funding in Measure H to provide critical services in a timely manner although progress is being made. The Partnership supports ongoing efforts by the L.A. County Board of Supervisors to ensure substantial Measure H funding is available to city governments, sub-regions and nonprofit organizations that can best utilize those limited tax dollars to effectively help the homeless.

THE PARTNERSHIP OPPOSES

- **Erosion of Municipal Land-Use Authority:** Local governments are closest to the people and have the best understanding of the character their communities. The state must respect local land-use decisions and stop imposing a heavy-handed, top-down land-use regime that dictates height, density, and zoning. Incentives for cities to actively encourage housing construction should be the primary approach

of the state rather than revoking local land-use decision-making authority.

- **Legislative and Regulatory Barriers that Inhibit Housing Construction:** Urban limit lines, building moratoriums, prevailing wage requirements, and excessive development fees all increase the cost of housing construction.
- **Rent Control:** Rent control does not improve the affordability of housing. It benefits relatively few renters and discourages new development in cities while requiring municipal governments to shoulder expensive enforcement costs. Several prominent California cities have had rent control for over 40 years and every indication shows that housing affordability has not improved in these communities.
- **Rent Caps:** With the passage of AB 1482, California has imposed a statewide cap on rent increases (plus inflation) for the next decade. This cap should be allowed to expire – it distorts the operation of the free market and discourages new housing construction.



Housing and Homelessness Facts

3,541 (7.4%)¹
increase in sheltered homelessness (2020–2021)

6%²
increase in homeless population in 2021 from 2007

28.7%³
of California residents living in or near poverty (2021)

13.7%⁴
of LA County residents living in poverty (2021)

64.2%⁵
of Californians families living in poverty with at least one working adult (2021)

\$794,000⁶
median home price in Los Angeles County (2021)

\$3,066⁷
median rent in Los Angeles County for a 2-bedroom apartment

LABOR AND EMPLOYMENT

A significant cost of doing business is the perpetual challenge of maintaining a safe workplace, complying with government labor regulations, and hiring and properly compensating employees. This is especially challenging in California, where rising health care expenses, the expansion of employer liability and frivolous lawsuits continue to increase costs and hamstring businesses with rules that confuse both employers and employees. State lawmakers should enact legislation that keeps an even playing field between labor and management.

THE PARTNERSHIP SUPPORTS


- **Fair Wages and Safe Working Conditions:** Employers are obligated to fairly compensate their employees and comply with all employment rules required by law. They are to ensure that all employees work under safe and healthy conditions.
- **An Honest, Level Playing Field:** Legislation should provide clear, precise, and reasonable rules for employee-employer relations and an honest, level playing field for management, employees, and labor unions.
- **Limiting Frivolous Litigation:** State lawmakers should enact laws that minimize frivolous litigation by limiting punitive damages and encouraging the use of mediation or arbitration to resolve disputes.
- **Balanced Workers Compensation:** Workers compensation laws should balance disability benefits with reasonable employer liability while discouraging fraud, dishonesty, and abuse of the legal system.
- **Arbitration Agreements as Part of Employment Contracts:** Several bills have been introduced in California to challenge federal law regarding arbitration agreements as a condition of employment contracts. Arbitration is a proven process that reduces costly litigation, can effectively settle employment disputes and is much better alternative

than expensive, drawn-out litigation.

- **Company Option to Contest Workers Compensation Claims:** Under current state law, insurance companies are the ones that determine whether or not to contest a worker's compensation claim. Once the insurance company has decided not to contest the claim, businesses are left with no recourse. New legislation should allow companies the option of contesting compensation claims if the insurance company has chosen to forego it.
- **Clarification of Meal and Rest Periods:** State law should clarify and provide greater flexibility in meal and rest period rules, including flexibility in when those meal and rest periods can be taken as well as clarification on when those periods may be waived by employees.
- **Travel-Time Compensation:** State law should clarify travel-time compensation rules, including a definition of what is an ordinary commute.
- **Primary Cause of Injury:** State law should enact a determination threshold by which a workplace is determined to be the primary cause of an injury before claims are compensable.
- **Restoration of Independent Contractor Employment Status:** The recent California Supreme Court Dynamex decision threw out established state law and put in its place the 'ABC' test, thereby clouding the employment status of independent contractors. The Dynamex ruling has been codified in AB 5, which provides numerous exceptions obscuring the impact and consistency of the applicable legal standard distinguishing employees from lawfully existing independent contractors. The ambiguities in the new state law will invite further legal disputes and litigation. Millions of Californians work as independent contractors which provides employment on a schedule that suits their needs. State law should be amended to allow independent contractors to remain as an employment status while addressing the reasonable concerns regarding employee benefits and protections.

THE PARTNERSHIP OPPOSES

- **Card-check Unionization:** Card-check removes the private ballot for employees who may wish to keep their vote on unionization anonymous. Votes on whether to unionize should adhere to basic privacy privileges.



Construction along the Foothill Gold Line continues.

LOCAL CONTROL



Local governments are best suited to deal with local issues as they are closer to their residents, more responsive and can see the impacts of their decisions on a daily basis.

Local control in the sense of local awareness, involvement, and influence has always been the best way to have open and efficient governance. Their first-hand knowledge of the needs of those they represent is what helps inform state and federal officials when making policy decisions. Whenever possible federal and state governments should

seek to allow local governments the ability to determine the best way to implement state or national policies/programs to ensure that they work for their community.

THE PARTNERSHIP SUPPORTS

- **State and federal governments setting overarching goals** but maintaining decision making on how to best achieve the goals at the local level.
- **Providing local governments with adequate tools and resources** to implement state and federal mandates. These include reform to overly burdensome regulations and funding formulas.
- **Efforts to update the state reimbursement formulas** to equalize the distribution of funds to local governments.
- **Establishing clear and consistent rules and regulations** for local governments to comply with state and federal mandates.

REGULATION

The capitol dome of the Capitol Building in Sacramento, California.

Governments should enact policies that allow businesses to thrive, with a balanced approach towards reasonable taxation and regulation. The cost of doing business in California is significantly higher than in other states, making it more challenging for our businesses to compete. Excessive regulation is a major drag on the economy, requiring businesses to invest more time, money, and effort to comply with everchanging rules. State and local governments should undertake serious efforts to reduce the regulatory burden on business by eliminating outdated regulations, use cost/benefit analysis to determine the effect of proposed fees and rules, and create performance metrics to gauge the effectiveness of current regulations. A modern, balanced regulatory system gives businesses the confidence and certainty they need to hire, invest, and innovate.

THE PARTNERSHIP SUPPORTS

- **Congressional Review of Major Federal Regulations:** Regulatory agencies issue tens of thousands of rules and regulations every year with little congressional oversight. The Partnership supports legislation like the Regulatory Review Act and Regulatory Accountability Act that enable Congress to review and vote on major regulations that have a significant effect on the economy.
- **Mandatory Cost/Benefit Analysis for Proposed Regulations:** California should require a full cost/ benefit analysis to be completed by external peer review for major regulations (that have an estimated economic impact of over \$50 million) before they are implemented.
- **Establishing a Regulatory Revision Process:** Regulations can quickly become outdated through technological innovation. Regulatory agencies tend to focus on writing new regulations or enforcing those already on the books; they rarely revisit longstanding rules. Lawmakers should require regulatory agencies to periodically revise established rules to either update the regulation or eliminate them where possible.
- **California Regulatory Review:** The Governor's Office of Business and Economic Development should regularly measure the effectiveness of regulations and conduct retroactive reviews of their economic impact. Importance of Tax Relief: Tax relief should be provided as a vehicle

to balance the impact of regulations and retain business in California. The ability to retain businesses with policies that look towards tax relief will help California as it establishes itself as the 4th largest economy in the world and continues to move forward.

- **Increased Cyber Security:** The State of California should partner with the federal government to assist businesses to improve cyber security and their response capabilities to mitigate cyberattacks. Lawmakers should expand the legal authority to pursue those responsible for hacks and the theft of trade secrets and other sensitive information.
- **Property Rights:** Maintaining intellectual property rights is critical for businesses to profit from their research and development.

THE PARTNERSHIP OPPOSES


- **Anti-Business Policies:** Legislation, regulations and policies that will create a competitive disadvantage for San Gabriel Valley businesses and harm the business climate of the state.

STATE-REGULATED EMERGENCY RESPONSE


The coronavirus pandemic upended large parts of the global economy. Restaurants, hotels, entertainment venues, air travel, and tourism all suffered terribly and have not yet fully recovered. While others such as broadband providers and the logistics sector have been strained by heavy demand that is only expected to increase in the coming years. Local, state, and the federal government have been proactive in addressing the crisis, but now that the brunt of the pandemic has abated, major questions remain about unwinding emergency measures, maintaining assistance and easing restrictions on the normal operation of the market economy. This list of policy recommendations is not exhaustive but rather a starting point for lawmakers to consider when preparing for a complicated post-pandemic world.

THE PARTNERSHIP SUPPORTS

- **Adjusting Workplace Regulations to Allow for Greater Flex Scheduling:** Policymakers should embrace the adaptability employers used during the pandemic and adjust labor standards for remote work, teleconferencing, and extended flex scheduling. As employees work more and more from home, policy makers should embrace these as positive changes that often improve quality of life, reduce traffic congestion, and decrease greenhouse gas emissions.
- **Avoiding a Patchwork of Policies:** It is critical that local, federal and state governments strive for uniform policies and regulations, rather than allow a patchwork of different rules. The business community desperately needs clear, precise rules to follow, especially on labor and employment issues and health and safety standards. Aligning policies going forward will help businesses comply with new health standards.
- **Embracing the Pandemic Adaptations for Businesses:** Many city governments were swift to help their small businesses find innovative ways to still serve customers, like closing entire streets to provide outdoor dining, allowing alcohol sales as part of takeout food orders, or providing small grants to keep their businesses afloat. Local governments should retain this innovative outside the-box approach as they seek to help their business communities grow.
- **Ending the Eviction Moratorium:** Evictions were curtailed during the pandemic, to avoid infecting more people with the coronavirus and placing greater strain on the healthcare system. Rental assistance programs should continue but the moratorium on evictions should be phased out to allow the rental housing market to return to full operation.
- **California's Unemployment Insurance Debt:** State lawmakers provided some funding in the 2022 budget to pay off California's debt to the federal government for unemployment insurance debts racked up during the pandemic. However, without additional funding by the state, this debt will likely be placed on small business owners to pay – a de facto tax increase. The state should find ways of paying this debt without burdening small businesses.
- **Maintaining Project Roomkey/Homekey:** An influx of federal funding allowed many local governments across California to purchase hotel facilities and convert them into homeless housing facilities, thereby providing shelter to the most vulnerable during the pandemic. These facilities should be structurally improved and include wrap-around services to help the homeless address their mental illness, drug addictions, and other critical issues to keep them off the streets. In addition, making sure that job placement services are included with supportive services.
- **Limiting Inflation:** With trillions of dollars pumped into the economy, higher than normal inflation is likely to trouble the nation for the next decade. An aggressive monetary policy to limit the growth of inflation and maintain the purchasing power of the dollar should be pursued by the president, Congress, and the Federal Reserve regardless of party. This is especially important in California and the San Gabriel Valley which already has a very high cost of living.



Workspaces and schedules have changed - will the changes continue?



Many cities have adopted outdoor dining options as a result of pandemic-era changes.

TAXATION AND BUDGETARY POLICY

The financial stability of local, state, and federal governments has an immense effect on the economy. Governments should balance their budgets and carefully manage the revenues they receive through taxes and fees. Business pays a significant portion of local taxes and fees – in many cases at least two-thirds or more of total revenues – and therefore have a vested interest in assuring that taxes are equitable and that revenues are effectively spent.

The “Queen Califa” mural in the California State Capitol Building in Sacramento.

THE PARTNERSHIP SUPPORTS

- **Limited State Spending Increases:** The Partnership supports budgetary policy that limits annual increases by population growth and inflation. Excessive spending increases the financial burdens on Californians, who must pay higher taxes and fees to sustain these high levels of spending. The state should limit spending increases, avoiding deficits and borrowing, and working within the available revenues to support state spending priorities.
- **Zero-based Budgeting Decennial Review** The Partnership supports a thorough, zero-based budgeting review of state programs every ten years.
- **Sunset Reviews:** The Partnership supports a thorough budgeting review of state programs every ten years. Every department should have a regular review process in place and should include the program impact(s) on the business sector.
- **State Rainy Day Fund:** We support an ongoing commitment from the governor and state legislature to continue making substantial deposits into the state’s rainy-day fund.
- **State Corporate Tax Reduction:** California has a high corporate tax rate which is passed on to consumers. The Partnership supports reducing the California corporate tax rate.
- **Deferred-Contribution Pension Reform:** Sustainable pension system reform is absolutely necessary to enable municipal governments, school districts, special districts, and the State of California to meet their long-term retirement obligations. The Partnership supports a switch to deferred-contribution pensions rather than the current system of deferred-benefit. Only in this way can the state’s pension funds meet their long-term obligations.
- **Revision of the Gann Limit:** With the level of

taxation, particularly with the corporate and capital gains taxes, the Gann Limit should be reviewed to ensure that the policy is being followed and still relevant for current needs.

THE PARTNERSHIP OPPOSES

- **Split Roll Property Taxes:** The Partnership supports Proposition 13 protections for commercial property, especially in any consideration of enacting split roll property taxes.

California Tax and Budget Facts

2nd worst¹
2023 overall state business tax climate ranking

46th²
in California Corporate Tax Rate

48th³
in Sales Tax Rate

9th⁴
in U.S. (\$4,349) on tax collections per capita

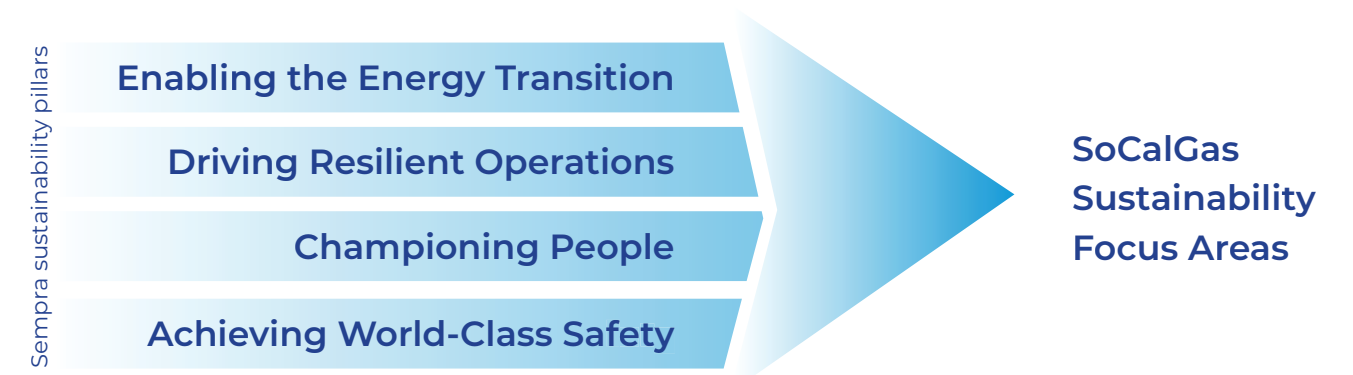
\$143.75 billion⁵
Personal Income Tax Revenues for State Budget 2021–2022

8.84%⁶
California state corporate tax rate

28 out of 50⁷
Ranking of California among the 50 states by corporate tax rate



ASPIRE 2045 is anchored by our core values of doing the right thing, championing people, and shaping the future. It is also aligned with the key sustainability pillars of our parent company, Sempra, which include enabling the energy transition, driving resilient operations, championing people, and achieving world-class safety.



For SoCalGas, sustainability is our path to a brighter future for our business and all those we serve—our employees, our customers, our state, and beyond. The energy evolution is the next chapter in our story of service to Californians. We are proud to support with the **San Gabriel Valley Economic Partnership** to advocate for sound policies that support a strong economy.

[SoCalGas.com/Aspire2045](https://www.socalgas.com/aspire2045)

OVER 1 TRILLION GALLONS RECYCLED

In Los Angeles County, about half of our drinking water comes from local water wells and the rest is imported from the Colorado River and Northern California. In 1962, we began producing recycled water that is used to refill our groundwater basins. Since then, we have been recycling at 10 of our 11 wastewater treatment plants and, along with our water agency partners, have recycled over 1 trillion gallons. That's enough water to fill an 8-foot diameter pipe that circles the earth 23 times! This recycling reduces the need to import water and makes our region more sustainable.

Nonetheless, we are striving to do more. We have partnered with the Metropolitan Water District of Southern California on the Pure Water Southern California program to reuse the water from our 11th plant. **This program could produce enough water for 1.5 million people, making it one of the world's largest water recycling efforts.**

For more info, contact us at info@lacsdsd.org or 562-908-4288, ext. 2300. For more on the new recycling project, visit www.mwdh2o.com/purewater.



SanDistricts
 SanitationDistrictsLACounty
 www.lacsdsd.org



TELECOMMUNICATIONS

Broadband access is critical to our daily lives and our local economy. Broadband allows individuals to find jobs, connect with loved ones, and learn virtually. SGVEP supports policies that promote private sector investment to expand and upgrade broadband networks to ensure that all San Gabriel Valley residents have access to affordable broadband. We also believe that state and local governments should work hand in hand with private sector Broadband providers in order to avoid duplication of services. These policies will help our residents gain access to greater educational, employment and healthcare opportunities and help our small businesses compete in a digital economy.

THE PARTNERSHIP SUPPORTS

- Uniform state and federal policies that encourage continued investment in telecommunications and improve access to new technologies.
- Legislation and regulations that will encourage innovative utility and telecommunications infrastructure.
- The prompt permitting by local government requests for the placement of infrastructure related to the expansion, construction, and implementation of advanced broadband networks, including the development of 5G Network.
- Financial incentives that help provide broadband internet to communities that lack access without prejudice.
- A policy that protects the rights of business and residential consumers to select the communications provider of their choice by providing communications companies the authority to enter buildings and businesses without prejudice, while complying with State and Federal laws.
- A transparent process when local governments considering the establishment of Government Owned Broadband Networks. As part of the process, local governments should:
 - Focus on gaps in service, not on competing with existing providers and not undermining private sector investment.
 - Assess private sector options, including public-private partnerships and reducing barriers to private sector service.
 - Provide a clear plan for how they would avoid increasing public debt, raising taxes on businesses and residents, and prevent the diversion of resources from other critical public services.
 - Consider feedback from all groups to ensure that the decision considers all risks and options.

THE BOARD OF DIRECTORS FOR THE UPPER SAN GABRIEL VALLEY MUNICIPAL WATER DISTRICT

PROUDLY SUPPORT THE
2023
SAN GABRIEL VALLEY
LEGISLATIVE GUIDE



Director
Anthony R. Fellow
Vice President
Division 1



Director
Charles M. Treviño
Treasurer
Division 2



Director
Ed Chavez
Secretary
Division 3



Director
Katarina Garcia
Treasurer
Division 4



Director
Jennifer Santana
President
Division 5



TRANSPORTATION & GOODS MOVEMENT

Port of LA Top 5 Trading Partners, 2020

\$132 billion¹

China/Hong Kong

\$37 billion

Japan

\$28 billion

Vietnam

\$18 billion

South Korea

\$16 billion

Taiwan

951 (1 in 9)

San Pedro Ports-related jobs in
five-country region

31%

of all containerized trade in
U.S. from San Pedro Bay port
complex (2021)

Trade from Asia accounted for 96% of cargo shipments
through the Port of Los Angeles in 2020.

Transportation is the lifeblood of the San Gabriel Valley economy, not only for local residents but for commuters across Southern California who travel through the region. It is critical that the network of major streets, highways, railways and mass transit bus and rail systems are properly maintained and remain effective at moving goods and people around the region. The Partnership has actively supported projects that expanded transit opportunities in and around the San Gabriel Valley such as the expansion of the Foothill Gold Line and I-10 Freeway interchange upgrades. With nearly half of the United States' imported container goods flowing through the Ports of Long Beach and Los Angeles, the condition, reliability, and speediness of the local ground-based transportation network is a vital national interest. Ready access to the freight network is also essential for many local businesses in the fast-growing logistics and goods movement sector.

THE PARTNERSHIP SUPPORTS

ONGOING MEASURE M – SAN GABRIEL VALLEY REGIONAL PROJECTS

- **Completion of the Foothill Gold Line Extension**
from Azusa to Montclair
- **Restructuring of the SR-57/SR-60 Confluence**
- **Expeditious completion of the SR-71 freeway gap**
in Pomona by CalTrans
- **Completion of the I-10/I-605 freeway interchange
upgrades**
- **SR-60/I-605 interchange HOV lane connectors**
- **Expeditions completion of the I-710 Corridor
Project**
- **Supporting the San Gabriel Valley Transit
Feasibility Study by the SGVCOG and LA Metro** to
evaluate and improve mobility throughout the region

Transportation and Goods Movement Facts

73.7%²

of LA County workers who drive to work alone

30.9 minutes³

average travel time to work in LA County

7th worst⁴

in U.S. Ranking of 57/60 highway confluence in
truck traffic

\$1.8 million⁵

in General Fund Spending towards SoCal transit and
rail projects (2021 –22)

\$600 million⁶

in General Fund spending towards ports, freight,
and goods movement infrastructure (2021–22)

45th Out of 50⁷

California state ranking in transportation conditions
(2019)

8th⁸

in the nation for public transit usage (2019)

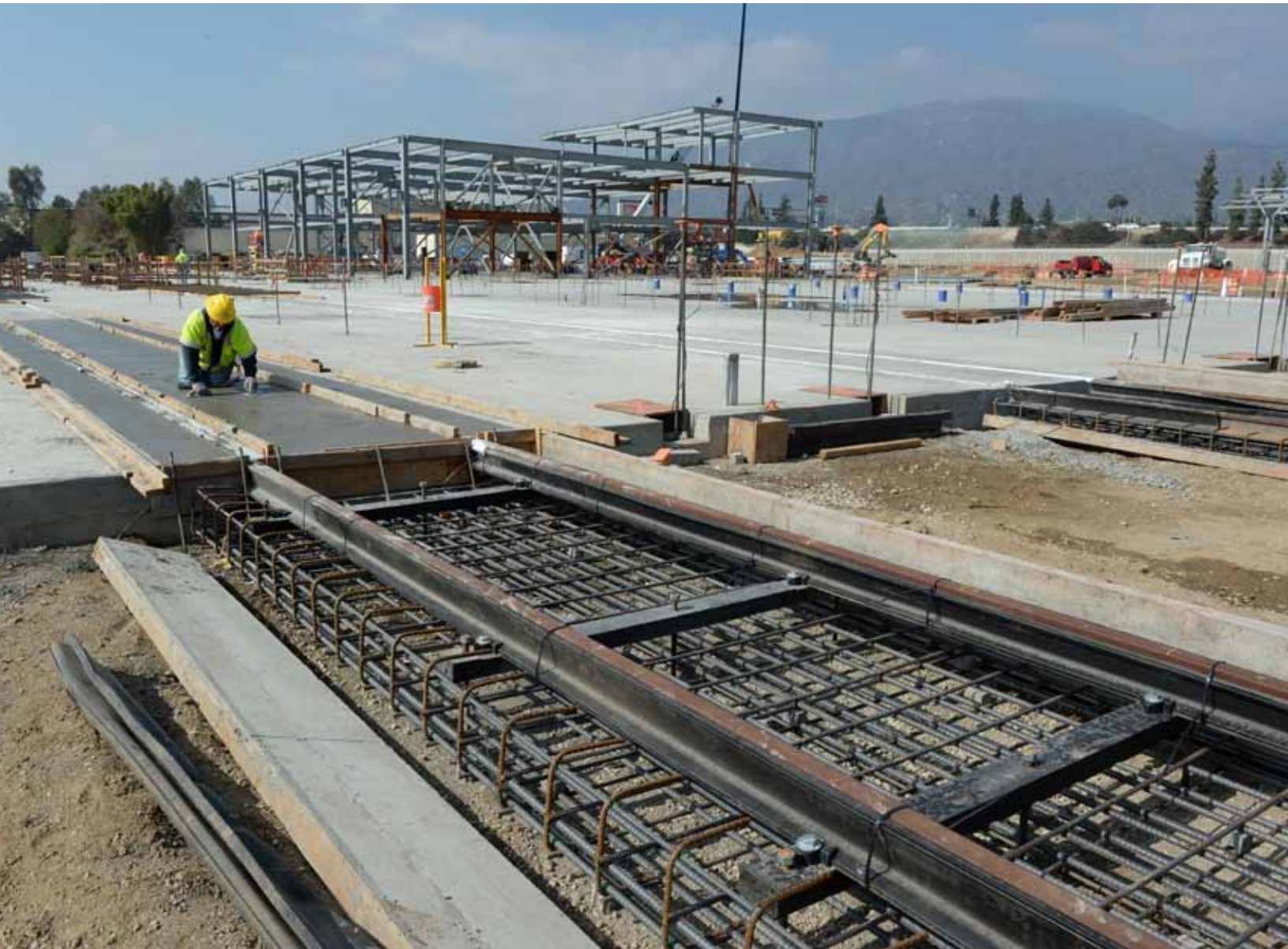
FUNDING AND TIMELY COMPLETION OF PROJECTS LED BY THE SAN GABRIEL VALLEY COUNCIL OF GOVERNMENTS

- **Alameda Corridor-East (ACE) Grade Separations:** Support for remaining ACE grade separations and freight mitigation projects in the region
- **SGV Bike Network:** Planning, design and construction of the SGV Bike Network with an emphasis on connecting the historic downtown business centers of the San Gabriel Valley
- **I-605 “Hot Spots”:** Completion of the I-605 “hot spots” mitigation projects to improve traffic flow from freeway off-ramps

LOCAL TRANSPORTATION INITIATIVES

- **Additional Funding to Complete the Foothill Gold Line Extension to Claremont and Montclair:** The cost of completing the Foothill Gold Line Extension has significantly increased due to high demand for labor and materials. The Partnership supports efforts

- to find federal, state, and local funding to complete the line to Claremont and Montclair.
- **Active Transportation:** The Partnership supports the efforts of local governments to encourage active transportation and bike sharing programs, especially as a means of economic development in the historic downtowns of the San Gabriel Valley. It also supports efforts to improve first mile-last mile connectivity with public transit.
 - **Public Transit:** The Partnership supports regional mass transit services to ensure residents have reliable transportation options, to reduce traffic congestion and improve local air quality. This includes support for the operations of Foothill Transit, Metro and Metrolink.
 - **I-10 Express Lane Expansion:** The Partnership supports expansion of the Express Lane tolling system on the I-10 corridor from the 605 junction to the San Bernardino County line with collected toll funds used to support local transportation projects within the region.



- **Bus Rapid Transit Expansion:** Expansion by Metro and Foothill Transit, where appropriate, for bus rapid transit (BRT) routes in the San Gabriel Valley, including BRT routes to Ontario International Airport.
- **Transfer of the 710 Freeway “Stubs”:** State legislation passed in 2019 removes a key segment of the 710-freeway corridor from Alhambra Avenue in Los Angeles to California Boulevard in Pasadena. The Partnership supports the transfer of the 710 stubs properties to local control due to the new development opportunities this substantial property offers.
- **Ontario International Airport:** Effective management and marketing, along with support from state and federal regulatory agencies, that will increase flights and passenger traffic out of Ontario International Airport, especially international flights to the Pacific Rim and non-stop service to more cities in the U.S.
- **Light Rail to Ontario Airport:** The Partnership supports San Gabriel Valley light rail access to Ontario International Airport and encourages Los Angeles County and San Bernardino County to work cooperatively to develop a viable light rail access plan for the facility.
- **Repair and Reopening of State Highway 39 in Azusa Canyon:** The state should repair and reopen State Highway 39 and keep open the junction with Highway 2 in the San Gabriel Mountains.
- **Infrastructure Updates:** The state should provide ongoing funding to build the infrastructure necessary to transition to zero-emission vehicles per California’s climate and environment goals.
- **Port Upgrades:** Infrastructure upgrades and improved rail access to the Ports of Long Beach and Los Angeles, especially on-dock rail at each port terminal.

STATE AND FEDERAL POLICY

- **Federal Transportation Funding:** The Partnership supports sustainable long-term federal investment in Southern California’s highways, railways, ports, and public transportation networks. It supports ongoing federal funding for the TIGER, INFRA, and NEVI programs.
- **TIFIA Credit Program:** The TIFIA Credit Program

- has been extremely successful and should be continued as a way of expediting the completion of more transportation and infrastructure projects across the country.
- **Private Activity Bonds:** The federal government should lift the cap on Private Activity Bonds from \$15 billion to \$100 billion, thereby encouraging private investment in public transportation infrastructure.
 - **State Funding Lockbox:** California state transportation dollars should be safeguarded and not be used for other budgetary purposes. Transportation funds in years past have been diverted to shore up other programs. State reforms should ensure that a steady, reliable funding stream is guaranteed for ongoing transportation repair and maintenance.
 - **Mileage-Based User Fees:** The Partnership supports funding for testing and pilot programs of mileage-based user fees as a potential funding alternative for the state and federal gas tax.
 - **Public-Private Partnerships:** Public-private partnerships and design-build strategies to complete transportation projects quickly and cheaply.
 - **Autonomous Vehicles:** Federal and state regulatory approval and ongoing oversight for pilot programs and testing of autonomous vehicles. These programs should include vehicles that are powered by combustion engines using gasoline, diesel and natural gas fuels, hybrid gas-electric vehicles, as well as all electric vehicles.



The Santa Fe Spreading Grounds is operated and maintained by the Los Angeles County Flood Control District. Imported water and captured stormwater percolates into the San Gabriel groundwater basin through the spreading grounds.

WATER

A secure, affordable water supply is essential to the quality of life for residents and businesses in the San Gabriel Valley. Many sectors of the economy use water as a fundamental component of their production process, notably agriculture and manufacturing. In order to effectively secure a reliable, long-term water supply, California must increase water storage capacity, clean up contaminated groundwater basins, upgrade and maintain conveyance infrastructure, continue efforts to improve conservation, and explore the potential in desalination, storm water capture and wastewater treatment. Only by investing in water infrastructure can California prepare itself against periodic droughts and a potentially drier climate in the future. It is especially important that serious regulatory hurdles preventing the reasonable conveyance of water supplies be addressed.

THE PARTNERSHIP SUPPORTS

- **A Clean, Reliable Water Supply:** The implementation of sound plans, strategies, programs, and projects that ensure a reliable, high quality and affordable water supply for the San Gabriel Valley.
- **New Water Sources:** In order to meet the water needs and demands of future generations, the state needs to prioritize identifying new sources of water in response to climate change.
- **Solve the Water Crisis Coalition:** It is beneficial for the future of water safety and accessibility to

support efforts that focus on raising awareness among California policymakers about the enormous water supply crisis and the urgency that requires bold and immediate State action.

- **Delta Conveyance:** A comprehensive infrastructure solution is essential to the viability of long-term water supplies in California. Building the tunnel conveyance system will ensure a reliable source of fresh water for Southern California while reducing the impact on the Sacramento-San Joaquin River Delta. The Partnership strongly supports building a reliable Delta water conveyance system along with

regulatory reforms to improve water conveyance across the state.

- **Measure W Implementation and Oversight:** L.A. County voters approved Measure W in 2018, a county-wide tax on private parcels to fund stormwater projects. The Partnership supports strong oversight of Measure W funds by the Board of Supervisors to see that funding for regional watershed projects and municipal projects are effective in capture of stormwater.
- **Funding to Address the Critical Failure of SGV Flood Control Dams:** The Army Corps of Engineers has found that the Whittier Narrows Dam is at extremely high risk of failing in the event of a catastrophic flood and that several other dams in the region have deteriorated and are also at a high risk of failure. The Partnership supports federal funding for studies, maintenance, and repairs to these dams as a top priority for the San Gabriel Valley.
- **Dam Sediment Removal:** Several dams in the San Gabriel Mountains have accumulated sediment behind them, diminishing the dams’ storage capacity and their effectiveness for flood control. Removing sediment is a difficult process, frequently disturbing existing habitats and putting many earth-moving trucks on local streets. The Partnership strongly supports L.A. County’s efforts to remove dam

sediment from Devil’s Gate, Morris, Cogswell, and Big Tujunga dams while balancing the traffic concerns of residents.

- **Additional State Storage Capacity:** California must add greater storage capacity in existing reservoirs and build new ones. If droughts may last ten years or more in the foreseeable future, significant additional storage capacity should be built beginning with the proposed Temperance Flat and Sites reservoirs and expansion of current reservoirs, Pacheco, and Los Vaqueros.
- **Groundwater Cleanup:** The San Gabriel Valley Restoration Fund should continue to receive federal funding so the cleanup of groundwater supplies in the Main San Gabriel Groundwater Basin may proceed.
- **Water Conservation:** Implementation of effective conservation programs throughout California.
- **Desalination:** After clearing decades-long environmental and permitting reviews, several significant desalination projects are now operating in California to desalt brackish groundwater or sea water for potable use. The Partnership supports these projects, when cost effective, as alternative means of delivering fresh water for Southern California.



SAN GABRIEL VALLEY
ELECTED OFFICIALS

The Library of Congress in
Washington, D.C.
Photo: Wikimedia Commons

EXECUTIVE BRANCH

UNITED STATES HOUSE OF REPRESENTATIVES



President Joe Biden
1600 Pennsylvania Avenue, NW
Washington, D.C. 20500
Phone: (202) 456-1111
Fax: (202) 456-2461
Website: whitehouse.gov
Email: president@whitehouse.gov
Twitter: @JoeBiden



Vice President Kamala Harris
1600 Pennsylvania Avenue, NW
Washington, D.C. 20500
Phone: (202) 456-1111
Fax: (202) 456-2461
Website: whitehouse.gov
Email: vice_president@whitehouse.gov
Twitter: @KamalaHarris

UNITED STATES SENATOR



Senator Dianne Feinstein (D-CA)
331 Hart Senate Building
Washington, D.C. 20510
Phone: (202) 224-3841
Fax: (202) 228-3954
Website: feinstein.senate.gov
Twitter: @SenFeinstein

Los Angeles Office
1111 Santa Monica Blvd., Suite 915
Los Angeles, CA 90025
Phone: (310) 914-7300
Fax: (310) 914-7318



Senator Alex Padilla (D-CA)
112 Hart Senate Office Building
Washington, D.C. 20510
Phone: (202) 224-3553
Website: padilla.senate.gov
Twitter: @senalexpadilla
Fax: (202) 224-2200

Los Angeles Office
255 E. Temple St., Suite 1860
Los Angeles CA 90012
Phone: (310) 231-4494
Fax: (202) 224-0357



Rep. Judy Chu (D-28th)
2423 Rayburn HOB
Washington, DC 20515
Phone: (202) 225-5464
Fax: (202) 225-5467
Website: chu.house.gov
Twitter: @RepJudyChu

Pasadena Office
527 S. Lake Ave., Suite 250
Pasadena, CA 91101
Phone: (626) 304-0110
Fax: (626) 304-0132

Claremont Office
(Tuesdays & Thursdays)
415 W. Foothill Blvd., Ste. 122
Claremont, CA 91711
Phone: (909) 625-5394
Fax: (909) 399-0198



Rep. Grace Napolitano (D-31st)
1610 Longworth HOB
Washington, DC 20515
Phone: (202) 225-5256
Fax: (202) 225-0027
Website: napolitano.house.gov
Twitter: @GraceNapolitano

El Monte Office
4401 Santa Anita Ave., Suite 201
El Monte, CA 91731
Phone: (626) 350-0150
Fax: (626) 350-0450



Rep. Linda Sanchez (D-38th)
2428 Rayburn HOB
Washington, DC 20515
Phone: (202) 225-6676
Fax: (202) 226-1012
Website: lindasanchez.house.gov
Twitter: @RepLindaSanchez

Norwalk Office
12440 E. Imperial Hwy.
Ste.140
Norwalk, CA 90650
Phone: (562) 860-5050
Fax: (562) 924-2914



Rep. Adam Schiff (D-30th)

2309 Rayburn HOB
Washington, DC 20515
Phone: (202) 225-4176
Fax: (202) 225-5828
Website: schiff.house.gov
Twitter: @RepAdamSchiff

Burbank Office
245 E. Olive Ave.
Ste. 200
Burbank, CA 91502
Phone: (818) 450-2900
Fax: (818) 450-2928



Rep. Norma Torres (D-35th)

2227 Rayburn HOB
Washington, DC 20515
Phone: (202) 225-6161
Fax: (202) 225-8671
Website: torres.house.gov
Twitter: @NormaJTorres

Ontario Office
3200 Inland Empire Blvd.
Ste. 200B
Ontario, CA 91764
Phone: (909) 481-6474
Fax: (909) 941-1362



Governor Gavin Newsom (D)

State Capitol, 1st Floor
Sacramento, CA 95814
Phone: (916) 445-2841
Fax: (916) 558-3160
Website: www.gov.ca.gov
Twitter: @GavinNewsom

Los Angeles Office
300 S. Spring St., Suite 16701
Los Angeles, CA 90013
Phone: (213) 897-0322
Fax: (213) 897-0319



Lieutenant Governor Eleni Kounalakis (D)

State Capitol
Room 1114
Sacramento, CA 95814
Phone: (916) 445-8994
Fax: (916) 323-4998
Website: ltg.ca.gov
Twitter: @CALtGovernor
Email: eleni.kounalakis@ltg.ca.gov



Attorney General Rob Bonta (D)

1300 "I" St., Ste. 1740
Sacramento, CA 95814
Phone: (916) 210-6029
Fax: (916) 323-5341
Website: oag.ca.gov
Twitter: @RobBonta

Los Angeles Office
300 S. Spring St.
Los Angeles, CA 90013
Phone: (213) 269-6000



State Controller Malia M. Cohen (D)

300 Capitol Mall
Suite 1850
Sacramento, CA 95814
Phone: (916) 445-2636
Fax: (916) 322-4404
Website: sco.ca.gov
Twitter: @MaliaCohen

Los Angeles Field Office
888 S. Figueroa St.
Ste. 2050
Los Angeles, CA 90017
Phone: (213) 833-6010
Fax: (213) 833-6011



State Treasurer Fiona Ma (D)

915 Capitol Mall
Room 110
Sacramento, CA 95814
Phone: (916) 653-2995
Fax: (916) 653-3125
Website: treasurer.ca.gov
Twitter: @fionama

Los Angeles Office
300 S. Spring St.
Suite 8500
Los Angeles, CA 90013
Phone: (213) 620-4467
Fax: (213) 620-6309



Secretary of State Dr. Shirley N. Weber (D)

1500 11th St., 6th Floor
Sacramento, CA 95814
Phone: (916) 653-7244
Fax: (916) 653-1458
Website: sos.ca.gov
Twitter: @CASOSvote

Los Angeles Office
300 S. Spring St.
Suite 12513
Los Angeles, CA 90013
Phone: (213) 897-6225
Fax: (213) 897-6855



Superintendent of Public Instruction Tony Thurmond (D)

1430 N St., Suite 5602
Sacramento, CA 95814
Phone: (916) 319-0800
Fax: (916) 319-0100
Website: cde.ca.gov
Twitter: @TonyThurmond
Email: superintendent@cde.ca.gov



Insurance Commissioner Ricardo Lara (D)

300 Capitol Mall
Suite 1700
Sacramento, CA 95814
Phone: (916) 492-3500
Website: insurance.ca.gov
Twitter: @RicardoLara4CA



Senator Bob Archuleta (D-30th)

1021 O St., Suite 6720
Sacramento, CA 95814
Phone: (916) 651-4032
Fax: (916) 651-4132
Website: sd32.senate.ca.gov
Twitter: @senbobarchuleta
Email: senator.archuleta@senate.ca.gov

Norwalk Office
12501 Imperial
Highway
Suite 110
Norwalk, CA 90650
Phone: (562) 860-3202



Senator Josh Newman (D-29th)

1021 O St., Suite 6520
Sacramento, CA 95814
Phone: (916) 651-4029
Fax: (916) 651-4929
Website: sd29.senate.ca.gov
Twitter: @JoshNewmanCA
Email: senator.newman@senate.ca.gov

Fullerton Office
203 N. Harbor Blvd.
Fullerton, CA 92832
Phone: (714) 525-2342
Fax: (714) 525-2367



Senator Anthony J. Portantino (D-25th)

1021 O St., Suite 7630
Sacramento, CA 95814
Phone: (916) 651-4025
Fax: (916) 651-4925
Website: sd25.senate.ca.gov
Twitter: @Portantino
Email: senator.portantino@senate.ca.gov

San Dimas Office
201 East Bonita Ave.
San Dimas, CA 91773
Phone: (909) 599-7351
Fax: (909) 599-7692

Glendale Office
601 E Glenoaks, Suite 210
Glendale, CA 91207
Phone: (818) 409-0400
Fax: (818) 409-1256



Senator Susan Rubio (D-22nd)

1021 O St., Suite 8710
Sacramento, CA 95814
Phone: (916) 651-4022
Fax: (916) 651-4922
Web site: sd22.senate.ca.gov
Twitter: @sensusanrubio
Email: senator.rubio@senate.ca.gov

West Covina Office
100 S. Vincent Ave.
Ste. 401
West Covina, CA 91790
Phone: (626) 430-2499



Asm. Lisa Calderon (D-56th)

State Capitol
P.O. Box 942849
Sacramento, CA 94249
Phone: (916) 319-2057
Fax: (916) 319-2157
Website: a56.asmdc.org

Twitter: @AsmLisaCalderon

Email: assemblymember.calderon@assembly.ca.gov

City of Industry Office
13181 Crossroads Parkway North
Suite 160
City of Industry, CA 91746-3497
Phone: (562) 692-5858
Fax: (562) 695-5852



Asm. Mike Fong (D-49th)

P.O. Box 942849
Sacramento, CA 94249-0049
Phone: (916) 319-2049
Fax: (916) 319-2149
Website: a49.asmdc.org
Twitter: @AsmMikeFong
Email: assemblymember.fong@assembly.ca.gov

Monterey Park Office
1255 Corporate Center Dr. Ste 216
Monterey Park, CA 91754
Phone: (323) 264-4949
Fax: (323) 264-4916



Asm. Chris Holden (D-41st)

State Capitol
P.O. Box 942849
Sacramento, CA 94249
Phone: (916) 319-2041
Fax: (916) 319-2141
Website: a41.asmdc.org
Twitter: @ChrisHoldenNews
Email: assemblymember.holden@assembly.ca.gov

Pasadena Office
600 N. Rosemead Blvd.
Ste. 117
Pasadena, CA 91107
Phone: (626) 351-1917
Fax: (626) 351-6176

Claremont Office
415 W. Foothill Blvd.
Suite 124
Claremont, CA 91711
Phone: (909) 624-7876
Fax: (909) 626-2548



Asm. Freddie Rodriguez (D-53rd)

1021 O St., Suite 5250
Sacramento, CA 95814
Phone: (916) 319-2052
Fax: (916) 319-2152
Website: a53.asmdc.org
Twitter: @AsmRodriguez52

Email: assemblymember.rodriguez@assembly.ca.gov

Chino Office
13160 7th Street
Chino, CA 91710
Phone: (909) 902-9606
Fax: (909) 902-9761



Asm. Blanca Rubio (D-48th)

1021 O St., Suite 5140
Sacramento, CA 95814
Phone: (916) 319-2048
Fax: (916) 319-2148
Website: a48.asmdc.org
Twitter: @AsmBlancaRubio
Email: assemblymember.rubio@assembly.ca.gov

West Covina Office
100 N. Barranca St.
Suite 895
West Covina, CA 91791
Phone: (626) 960-4457
Fax: (626) 960-1310



Asm. Miguel Santiago (D-58th)

P.O. Box 942849
Sacramento, CA 94249-0054
Phone: (916) 319-2054
Fax: (916) 319-2154
Website: a54.asmdc.org
Twitter: @AsmSantiago
Email: assemblymember.santiago@assembly.ca.gov

Los Angeles Office
320 West 4th St., Room 1050
Los Angeles, CA 90013
Phone: (213) 620-4646
Fax: (213) 620-6319



Supervisor Kathryn Barger (District 5)

500 W. Temple St.
Room 869
Los Angeles, CA 90012

Phone: (213) 974-5555

Fax: (213) 974-1010

Website: kathrynbarger.lacounty.gov

Twitter: @kathrynbarger

Email: Kathryn@bos.lacounty.gov

East San Gabriel Valley Office

615 E. Foothill Blvd.
Suite A

San Dimas, CA 91773

Phone: (909) 394-2264



Supervisor Hilda Solis (District 1)

500 W. Temple St.
Room 856
Los Angeles, CA 90012

Phone: (213) 974-4111

Fax: (213) 613-1739

Website: hildasolis.org

Twitter: @HildaSolis

Email: firstdistrict@bos.lacounty.gov

San Gabriel Valley Office

215 N. Marengo Ave.
Suite 120

Pasadena, CA 91101

Phone: (626) 356-5407

San Gabriel Valley Office

1441 N. Santa Anita Ave.
South El Monte, CA 91733

Phone: (626) 350-4500

Fax: (626) 448-4945

East San Gabriel Valley Office

2245 N. Garey Ave.
Pomona, CA 91767

Phone: (909) 593-3661

Fax: (909) 593-9038



District Attorney George Gascon

211 West Temple Street
Suite 1200

Los Angeles, CA 90012

Phone: (213) 974-3512

Website: da.lacounty.gov

Twitter: @GeorgeGascon

Email: info@da.lacounty.gov



Sheriff Robert G. Luna

Hall of Justice

211 W. Temple St.

Los Angeles, CA 90012

Phone: (213) 229-1700

Website: lasd.org

Twitter: @LACoSheriff

Email: webmail@lasd.org



Assessor Jeffrey Prang

500 W. Temple St.
Room 225

Los Angeles, CA 90012

Phone: (213) 974-2111

Website: assessor.lacounty.gov

Twitter: @LACAssessor

Email: helpdesk@assessor.lacounty.gov

East District Office

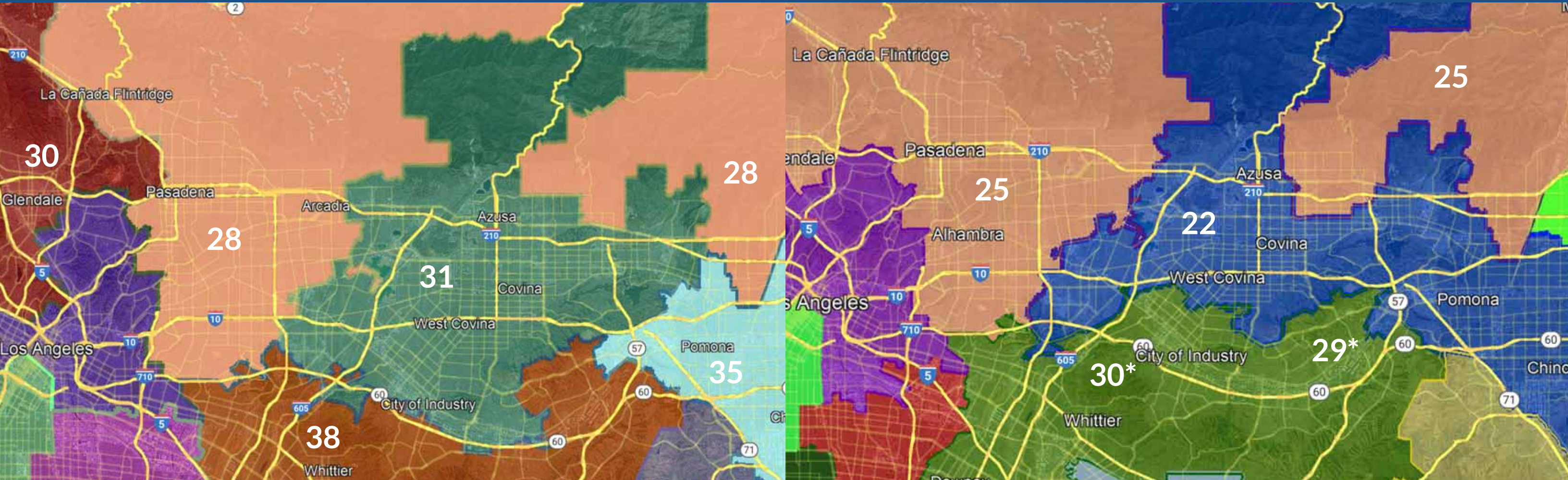
1196 Durfee Ave.

South El Monte, CA 91733

Phone: (626) 258-6001

SAN GABRIEL VALLEY
CONGRESSIONAL DISTRICTS

SAN GABRIEL VALLEY
STATE SENATE DISTRICTS



DISTRICT 28
Rep. Judy Chu



DISTRICT 35
Rep. Norma Torres



DISTRICT 30
Rep. Adam Schiff



DISTRICT 38
Rep. Linda Sanchez



DISTRICT 31
Rep. Grace Napolitano



DISTRICT 22
Sen. Susan Rubio



DISTRICT 25
Sen. Anthony Portantino



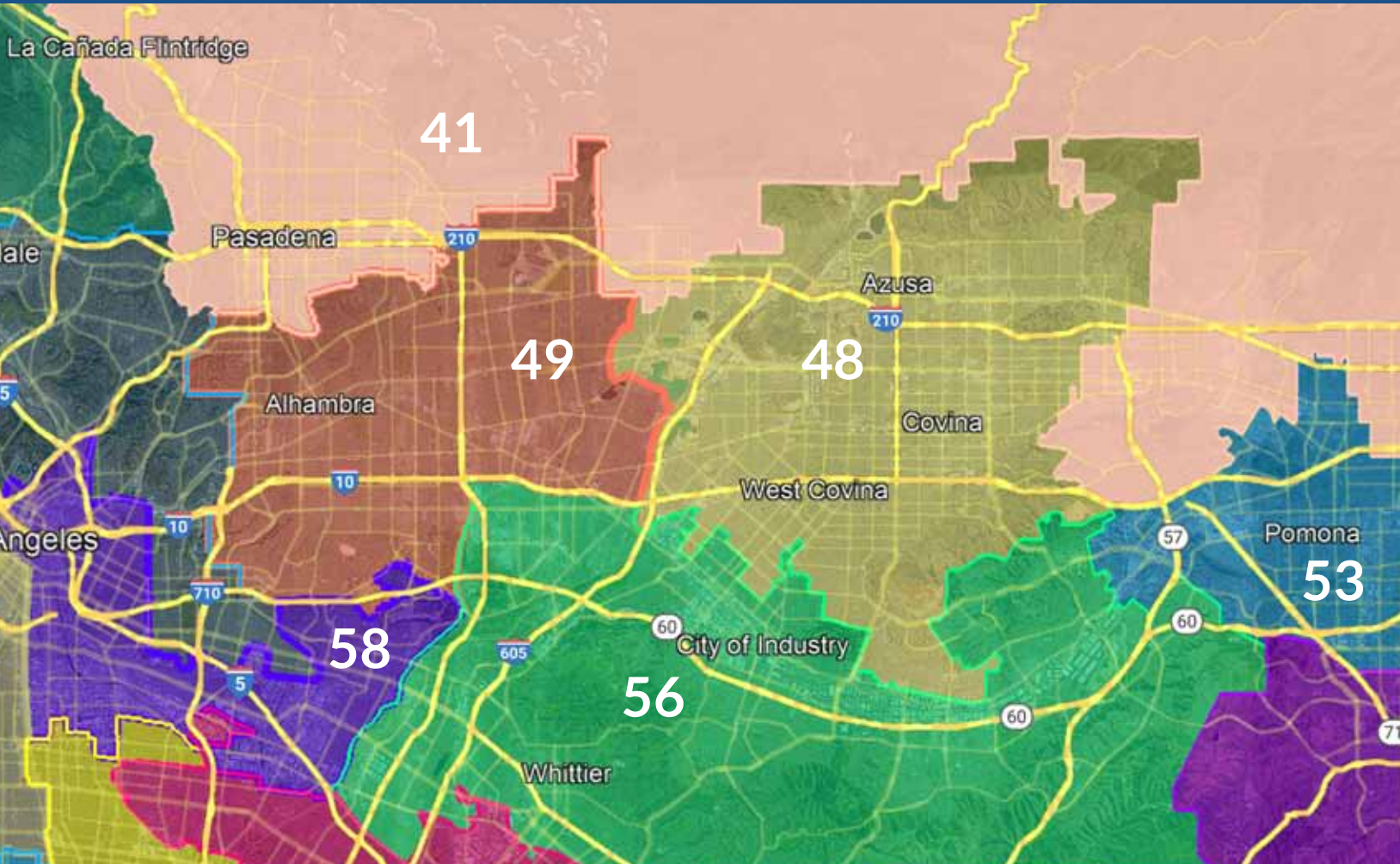
DISTRICT 29
Sen. Josh Newman



DISTRICT 30
Sen. Bob Archuleta

*Per the 2020 Census redistricting, Senate Districts 29 and 30 will have overlapping constituencies until after the 2024 election cycle. For more information, please visit <https://www.wedrawthelinesca.org/>

SAN GABRIEL VALLEY STATE ASSEMBLY DISTRICTS



DISTRICT 41
Asm. Chris Holden



DISTRICT 49
Asm. Mike Fong



DISTRICT 56
Asm. Lisa Calderon



DISTRICT 48
Asm. Blanca Rubio

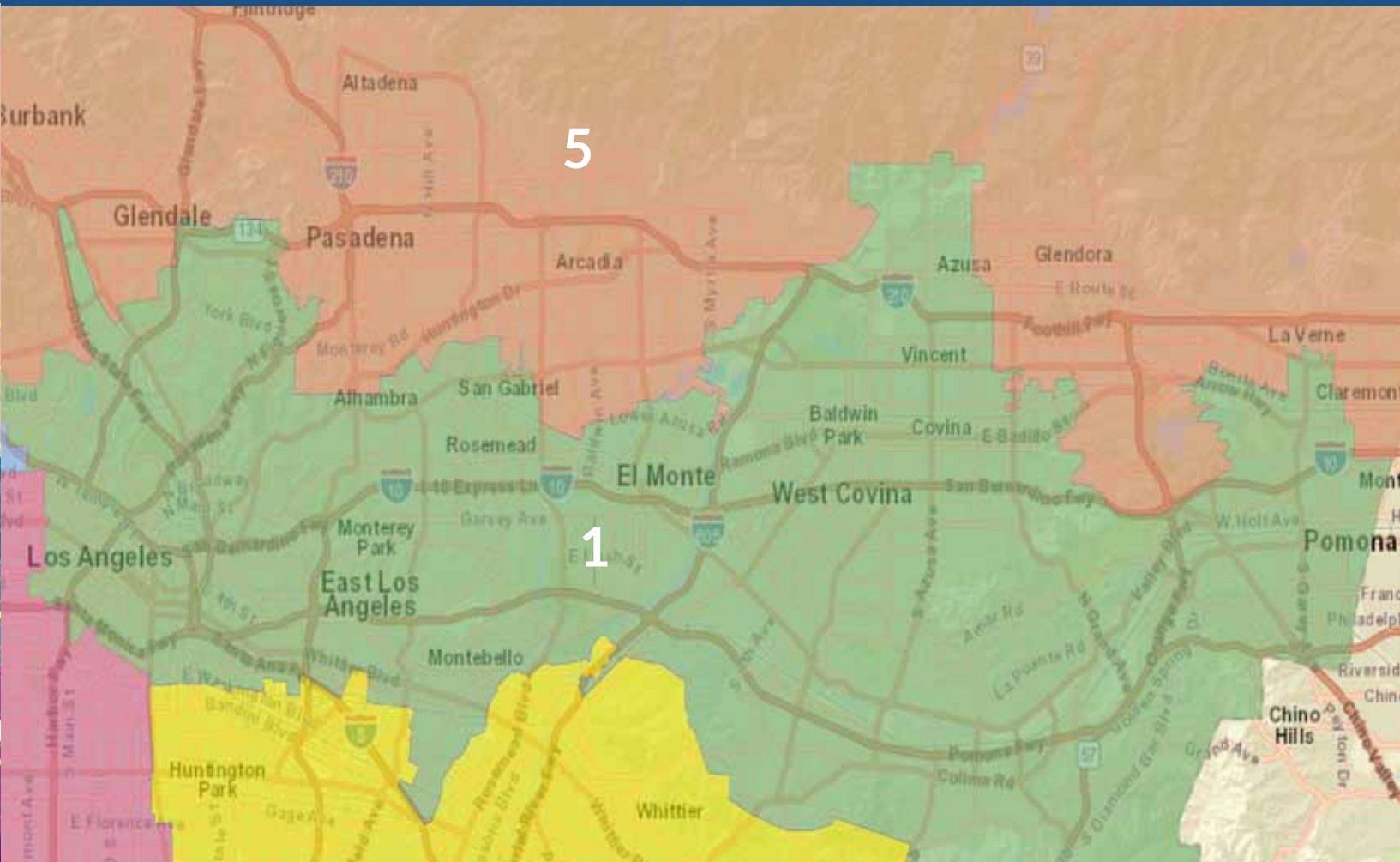


DISTRICT 53
Asm. Freddie Rodriguez



DISTRICT 58
Asm. Miguel Santiago

SAN GABRIEL VALLEY LOS ANGELES COUNTY SUPERVISORIAL DISTRICTS



DISTRICT 1
Supervisor Hilda Solis



DISTRICT 5
Supervisor Kathryn Barger

SOURCES CITED

CALIFORNIA TAX AND BUDGET FACTS

1. Fritts, J., & Walczak, J. (2023, February 3). *2023 State Business Tax Climate index*. Tax Foundation. Retrieved from <https://taxfoundation.org/2023-state-business-tax-climate-index/>

2. *Ibid.*

3. *Ibid.*

4. Fritts, J. (2022, March 29). *Facts & Figures 2022: How Does Your State Compare?* Tax Foundation. Retrieved from <https://taxfoundation.org/publications/facts-and-figures/>

5. Office of the California State Controller. Retrieved from https://sco.ca.gov/2022_personal_income_tax_tracker.html

6. CA State Franchise Tax Board. *Business Tax Rates*. Retrieved from <https://www.ftb.ca.gov/file/business/tax-rates.html>

ENERGY FACTS

1. U.S. Energy Information Administration. (n.d.). *State Profiles and Energy Estimates*. EIA. Retrieved from <https://www.eia.gov/state/print.php?sid=CA>

2. *Ibid.*

3. *Ibid.*

4. *Ibid.*

5. U.S. Energy Information Administration. (n.d.). *U.S. Energy Information Administration - EIA - independent statistics and*

analysis. EIA. Retrieved from <https://www.eia.gov/state/rankings>

6. *Ibid.*

7. *Ibid.*

8. *Ibid.*

9. *Ibid.*

HOUSING AND HOMELESSNESS FACTS

1. Office of Community Planning and Development. (2022, February). *The U.S. Department of Housing and Urban Development*. The U.S. Department of Housing and Urban Development. Retrieved from <https://www.huduser.gov/portal/sites/default/files/pdf/2020-AHAR-Part-1.pdf>

2. *Ibid.*

3. Person, Danielson, C., Malagon, P., & Bohn, S. (2022, October 26). *Poverty in California*. Public Policy Institute of California. Retrieved from <https://www.ppic.org/publication/poverty-in-california/#:~:text=More%20than%20a%20quarter%20of,2019%20to%2017.0%25%20in%20202>

4. *Ibid.*

5. *Ibid.*

6. Flemming, J. (2021, November 4). *What L.A. County's median home price - \$795,000 - buys in six areas*. Los Angeles Times. Retrieved from <https://www.latimes.com/business/>

[story/2021-11-04/what-l-a-countys-median-home-price-795-000-buys-in-six-areas](https://www.latimes.com/business/story/2021-11-04/what-l-a-countys-median-home-price-795-000-buys-in-six-areas)

7. *Cost of living calculator: Los Angeles-Long Beach, CA*. NerdWallet. (n.d.). Retrieved from <https://www.nerdwallet.com/cost-of-living-calculator/city-life/los-angeles-long-beach-ca>

TRANSPORTATION AND GOODS MOVEMENT FACTS

1. *Port of Los Angeles Facts and Figures Card (2021)*. Port of Los Angeles. (2021, December). Retrieved from <https://kentico.portoflosangeles.org/getmedia/c39cbb51-d52e-44bd-89c8-41eba408ab12/2021-Facts-Figures>

2. *Ibid.*

3. *Ibid.*

4. McBride, J., & Siripurapu, A. (2021, November 8). *The State of U.S. Infrastructure*. Council on Foreign Relations. Retrieved from <https://www.cfr.org/backgrounder/state-us-infrastructure>

5. Southern California Association of Governments Regional Council. (2019, May). *Local Profiles - Los Angeles County*. Southern California Association of Governments. Retrieved from <https://scag.ca.gov/sites/main/files/file-attachments/losangelescountyp.pdf>

6. *Ibid.*


7. Atri. (2022, December 5). *Top 100 Truck Bottlenecks – 2022*. American Transportation Research Institute. Retrieved from <https://truckingresearch.org/2022/02/08/top-100-truck-bottlenecks-2022/>

6. *The 2022-23 California Spending Plan: Transportation*. Legislative Analyst's Office. (2022, September 29). Retrieved from <https://lao.ca.gov/Publications/Report/4628>

7. *Ibid.*



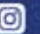
8. *Best States for Transportation | US News Best States*. U.S. News. (n.d.). Retrieved from <https://www.usnews.com/news/best-states/rankings/infrastructure/transportation>

9. *Ibid.*



INDUSTRY WORKS... FOR LOCAL JOBS

www.cityofindustry.org
www.industrybc.org


  

FOLLOW US | @industryca


The City of Industry has a workforce population of more than 65,000 people working in over 3,000 companies, including over 230 manufacturers located in the City. Designed to attract businesses that benefit from a skilled and dedicated workforce from the surrounding communities, the City is committed to continuously improving the necessary tools to attract manufacturers and employees that want to grow and take pride in American made products.

Please visit the Industry Business Council to learn more about the Made in City of Industry program and the City of Industry's dedication to **Jobs, Enterprise, and Regional Infrastructure**.

*Based on the 2022 BizFed/Pulse Poll



"CITY OF INDUSTRY,"
named one of the top
business friendly cities
in Los Angeles County"





Water Quality Authority

CLEANING UP GROUNDWATER FOR FUTURE GENERATIONS

WHO WE ARE

Over our 30-year history, we
worked with partners to clean up
1.9 million acre-feet of
contaminated groundwater.

BOARD MEMBERS

MARK PAULSON CHAIRMAN	VALERIE MUNOZ SECRETARY
LYNDA NORIEGA VICE CHAIRWOMAN	MICHAEL WHITEHEAD TREASURER
BOB KUHN BOARD MEMBER	ROBERT GONZALES BOARD MEMBER
ED CHAVEZ BOARD MEMBER	

WHAT WE DO

- COORDINATE GROUNDWATER CLEANUP
- INFORM THE PUBLIC
- ASSIST COOPERATING RESPONDENTS
- PREVENT OR MINIMIZE MIGRATION OF CONTAMINATION
- REMOVE CONTAMINATION QUICKLY & EFFICIENTLY
- PROTECT GROUNDWATER RESOURCES
- FUND WQA PROJECTS AND PROGRAMS WITH OUTSIDE FUNDING SOURCES

CONTACT US

 626-338-5555

 info@rwqa.com

 1720 W. Cameron Ave.
Suite 100
West Covina, CA
91790

STAFF

RANDY SCHDELLERMAN, P.E. EXECUTIVE DIRECTOR	DAN COLBY ASSISTANT EXECUTIVE DIRECTOR/SENIOR PROJECT MANAGER
MARY SAENZ, CPA DIRECTOR OF FINANCE	STEPHANIE MORENO, MPA EXECUTIVE ASSISTANT/PUBLIC OUTREACH COORDINATOR
	JACKIE MONTGOMERY ADMINISTRATIVE/ACCOUNTING ASSISTANT

www.wqa.com

CONNECT WITH US
@SCBWQA



LEADERSHIP MEMBERS



**LOS ANGELES COUNTY
SANITATION DISTRICTS**
Converting Waste Into Resources



San Gabriel Valley Economic Partnership
248 E. Foothill Blvd, Suite 100, Monrovia CA 91016
info@sgvpartnership.org (626) 856-3400